



CASTLE PARK

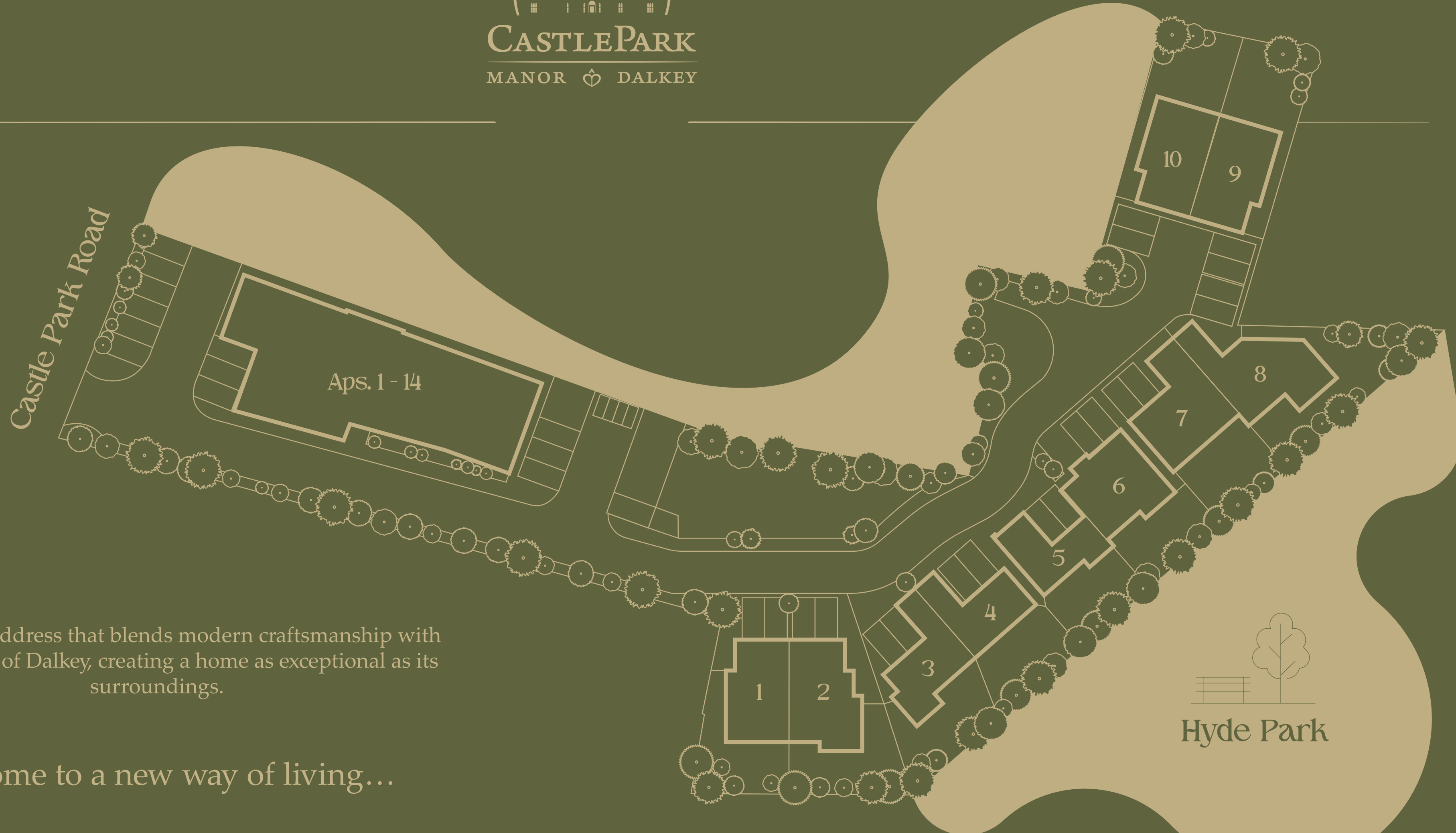
MANOR  DALKEY



CASTLE PARK MANOR,  
Catlepark Road,  
Dalkey



**CASTLE PARK**  
MANOR  DALKEY



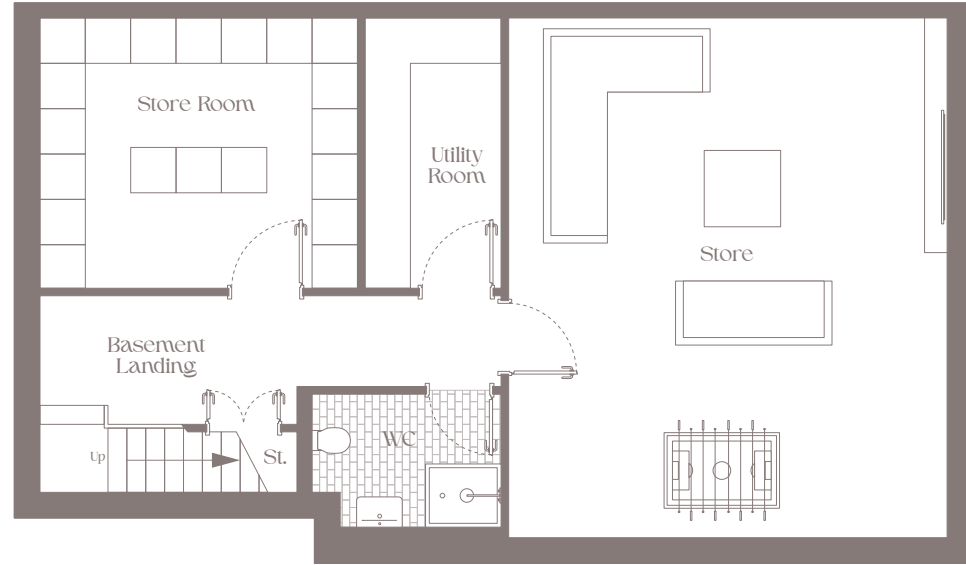
A visionary address that blends modern craftsmanship with the character of Dalkey, creating a home as exceptional as its surroundings.

Welcome to a new way of living...



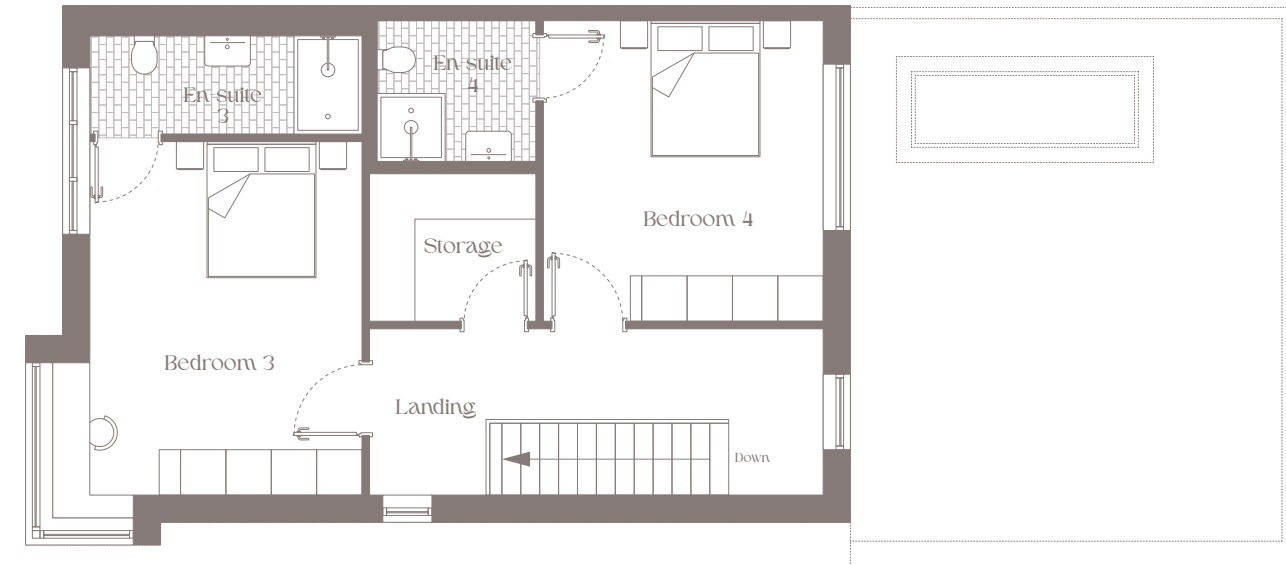
# HOUSE 1

## Castle Park Manor



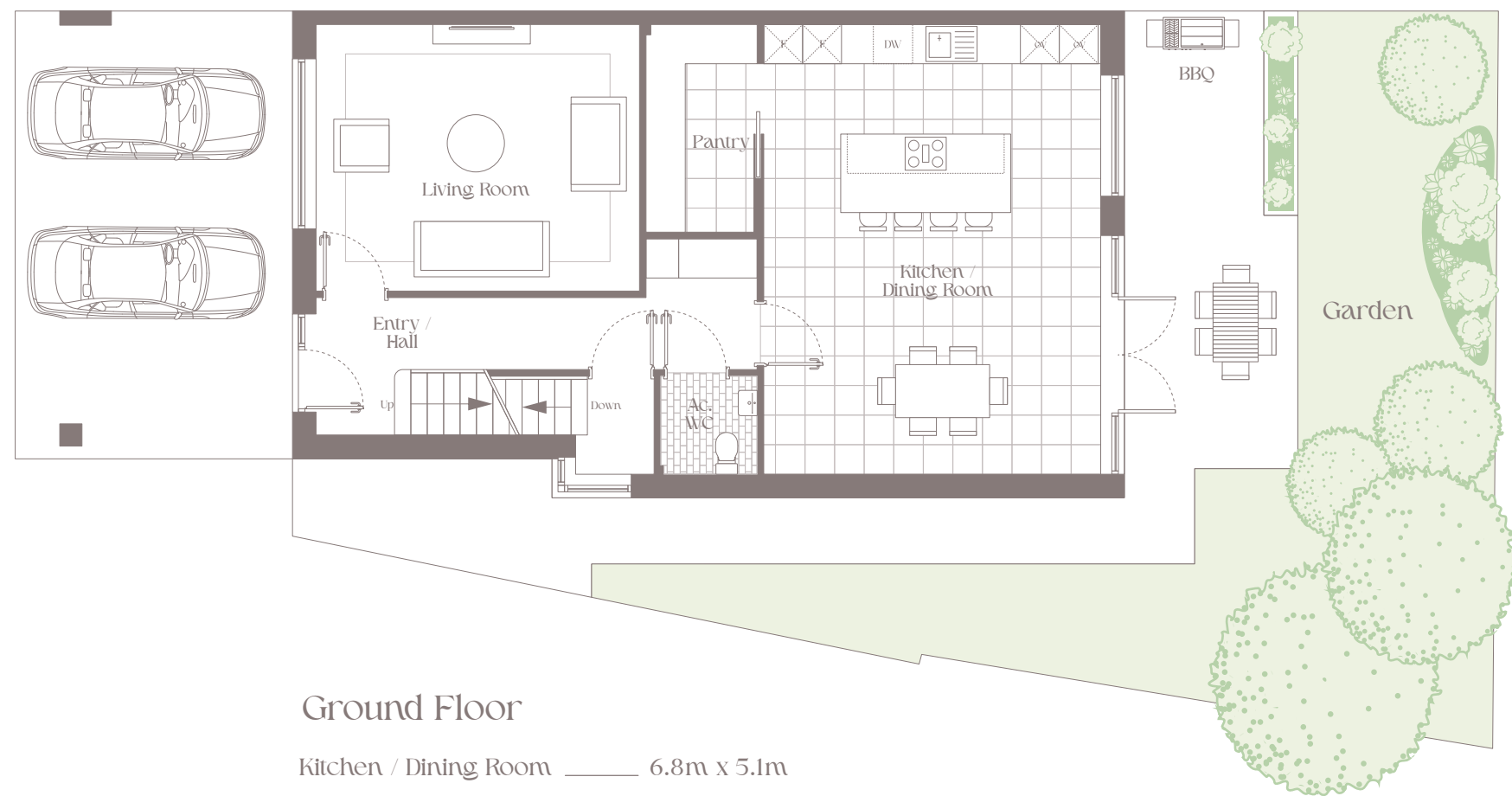
### Basement

WC	1.9m x 2.6m
Utility Room	3.6m x 1.8m
Storage Room	3.5m x 4.2m
Store	6.8m x 5.8m



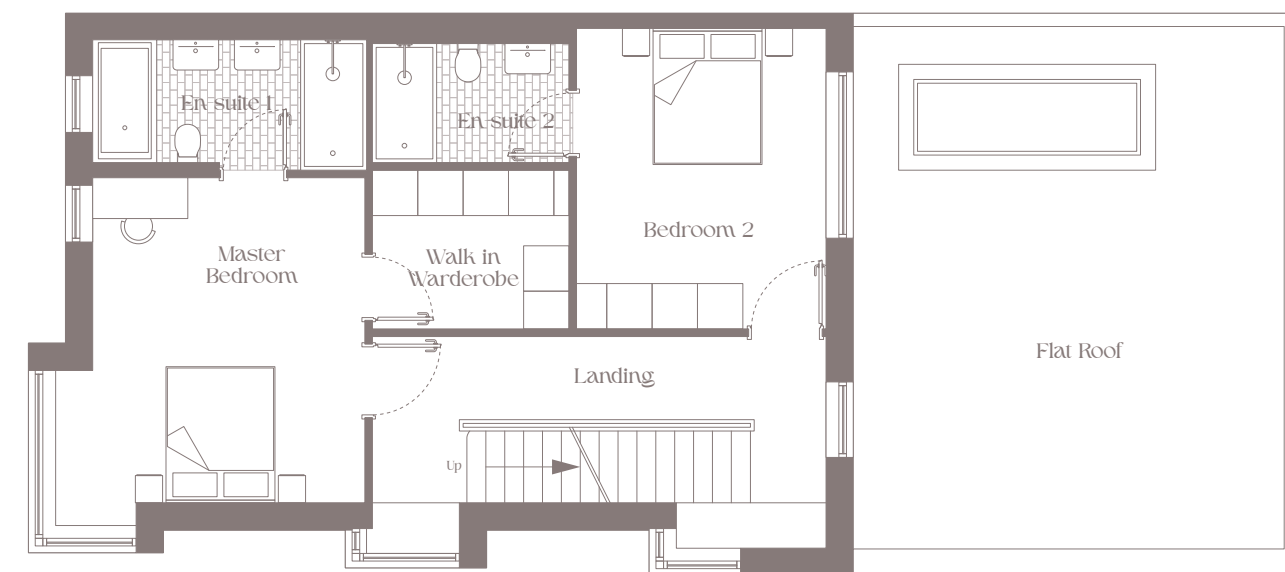
### Second Floor

Bedroom 3	4.6m x 3.6m
Bedroom 4	3.9m x 3.7m
En-suite 3	1.3m x 3.6m
En-suite 4	1.8m x 2.1m
Storage	1.9m x 2.2m



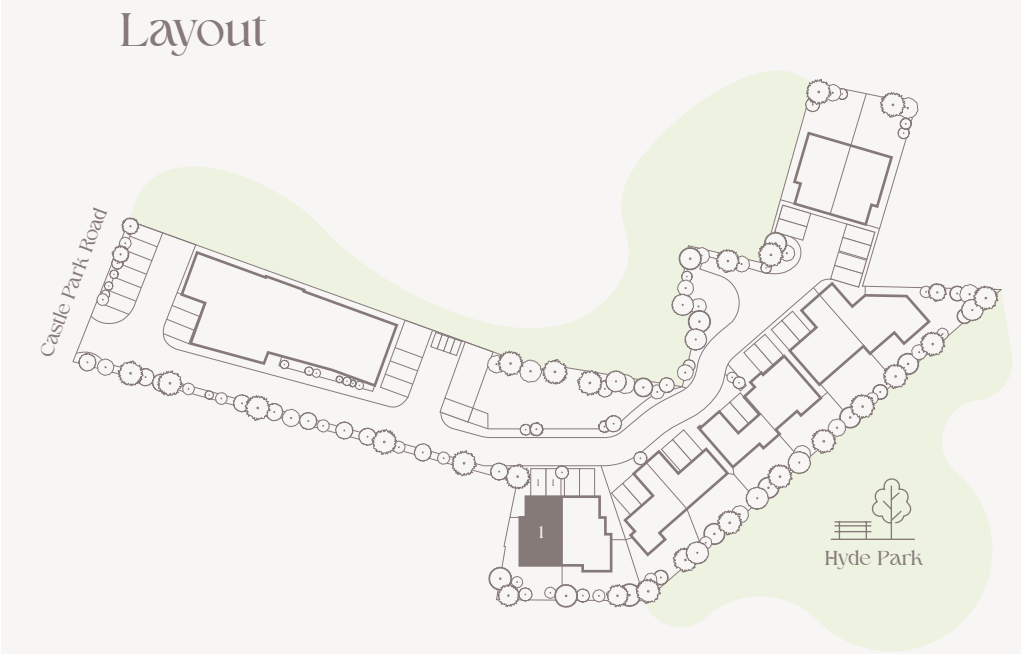
### Ground Floor

Kitchen / Dining Room	6.8m x 5.1m
Pantry	3.1m x 1.6m
Living Room	4.0m x 4.9m
Ac. WC	1.5m x 1.4m

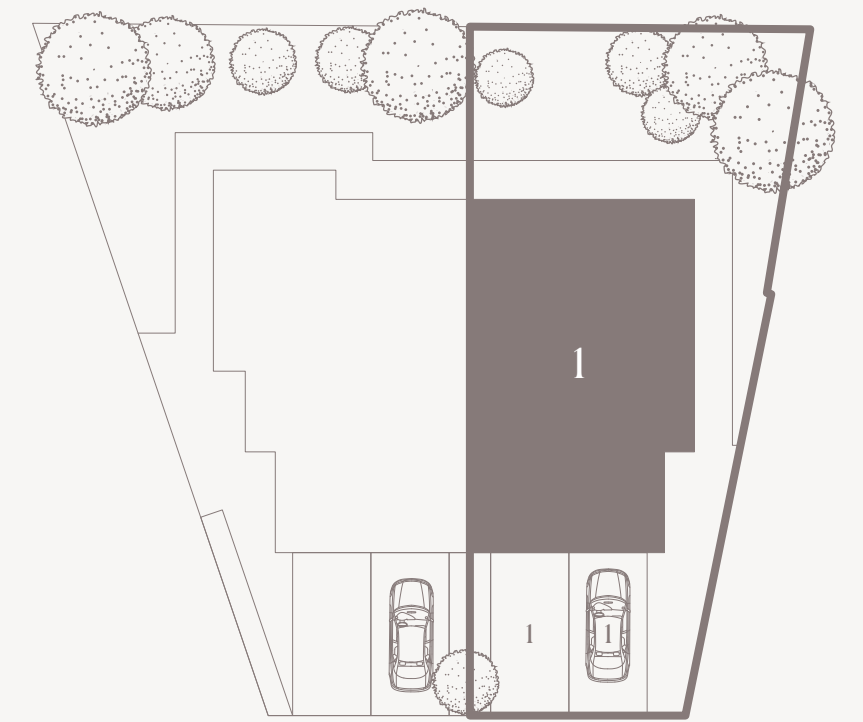


### First Floor

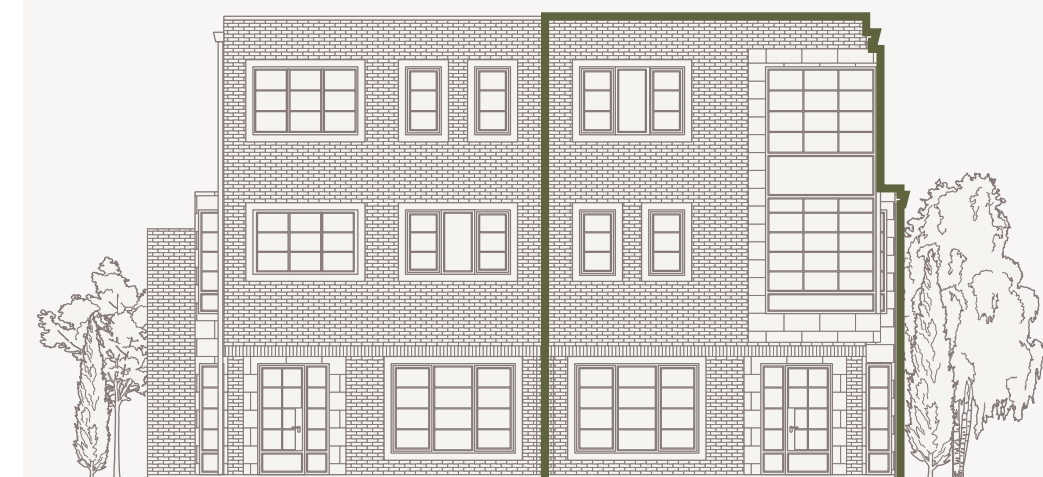
Master Bedroom	4.3m x 3.6m
Bedroom 2	3.9m x 3.3m
Walk in Wardrobe	2.1m x 2.6m
En-suite 1	1.7m x 3.6m
En-suite 2	1.5m x 2.6m



### House 1

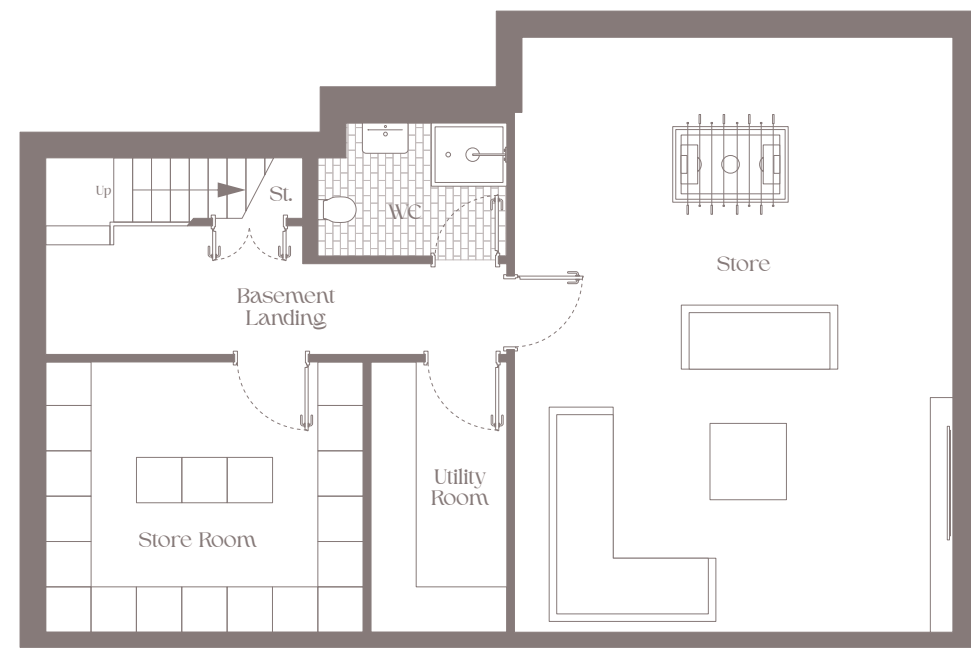


### Elevation



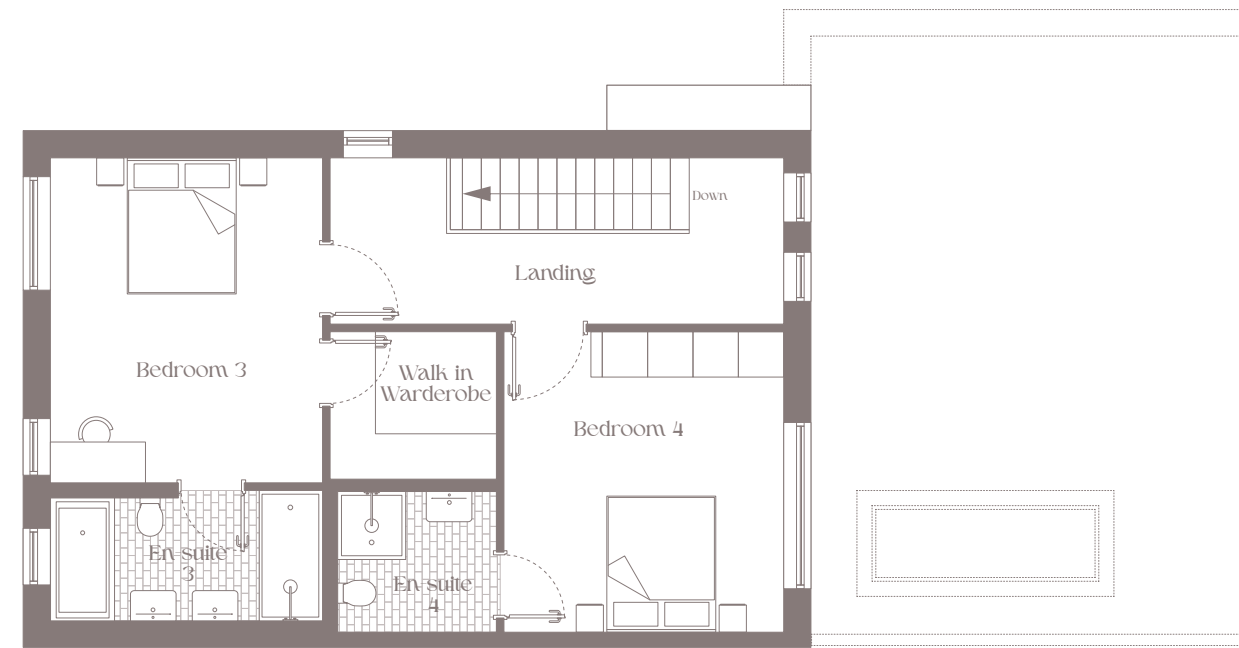
# HOUSE 2

## Castle Park Manor



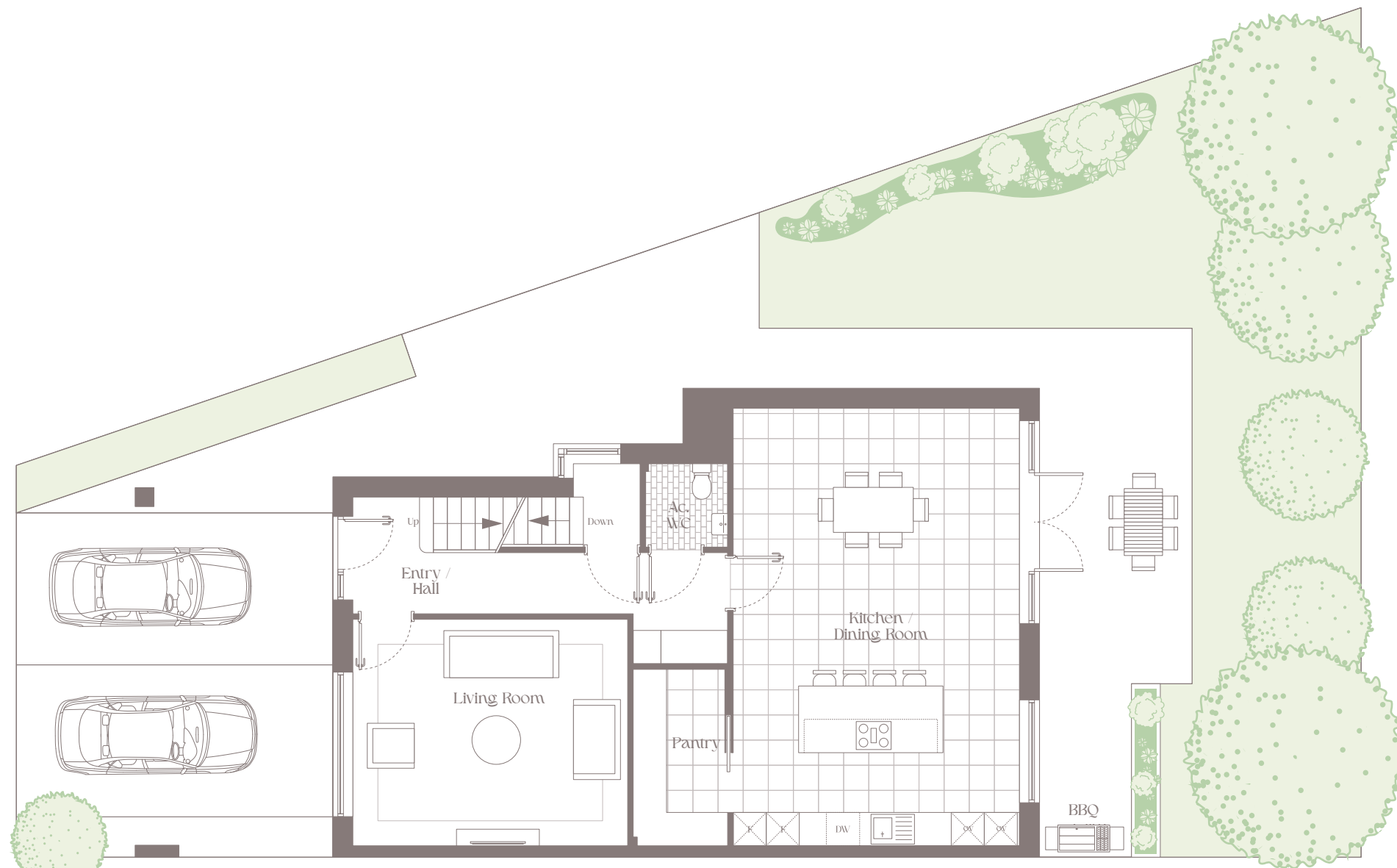
Basement

WC	1.9m x 2.6m
Utility Room	3.6m x 1.8m
Storage Room	3.5m x 4.2m
Store	7.8m x 5.8m



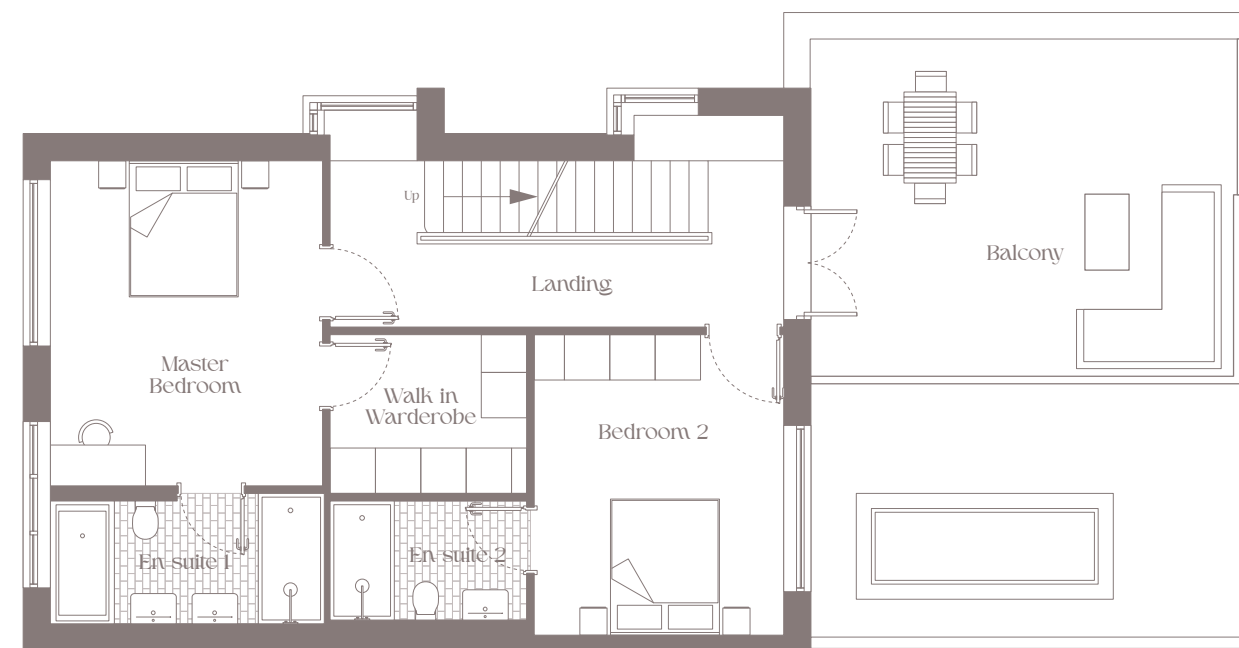
Second Floor

Bedroom 3	4.3m x 3.6m
Bedroom 4	3.9m x 3.7m
En suite 3	1.7m x 3.6m
En suite 4	1.8m x 2.1m
Walk in Wardrobe	1.9m x 2.2m



Ground Floor

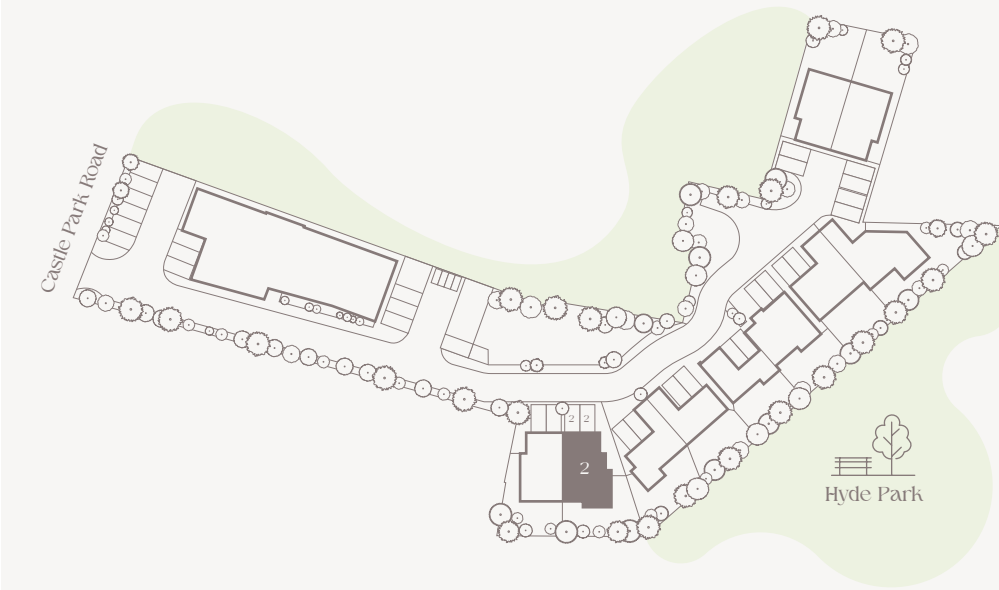
Kitchen / Dining Room	7.8m x 5.1m
Pantry	3.1m x 1.6m
Living Room	4.0m x 4.9m
Ac. WC	1.5m x 1.4m



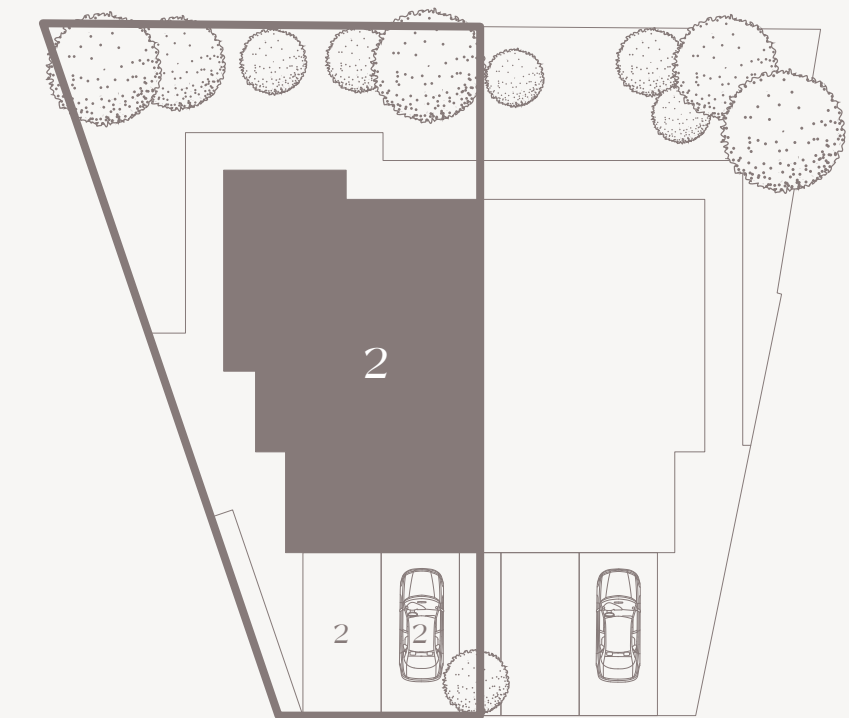
First Floor

Master Bedroom	4.3m x 3.6m
Bedroom 2	3.9m x 3.3m
Walk in Wardrobe	2.1m x 2.6m
En suite 1	1.7m x 3.6m
En suite 2	1.5m x 2.6m

Layout



House 1

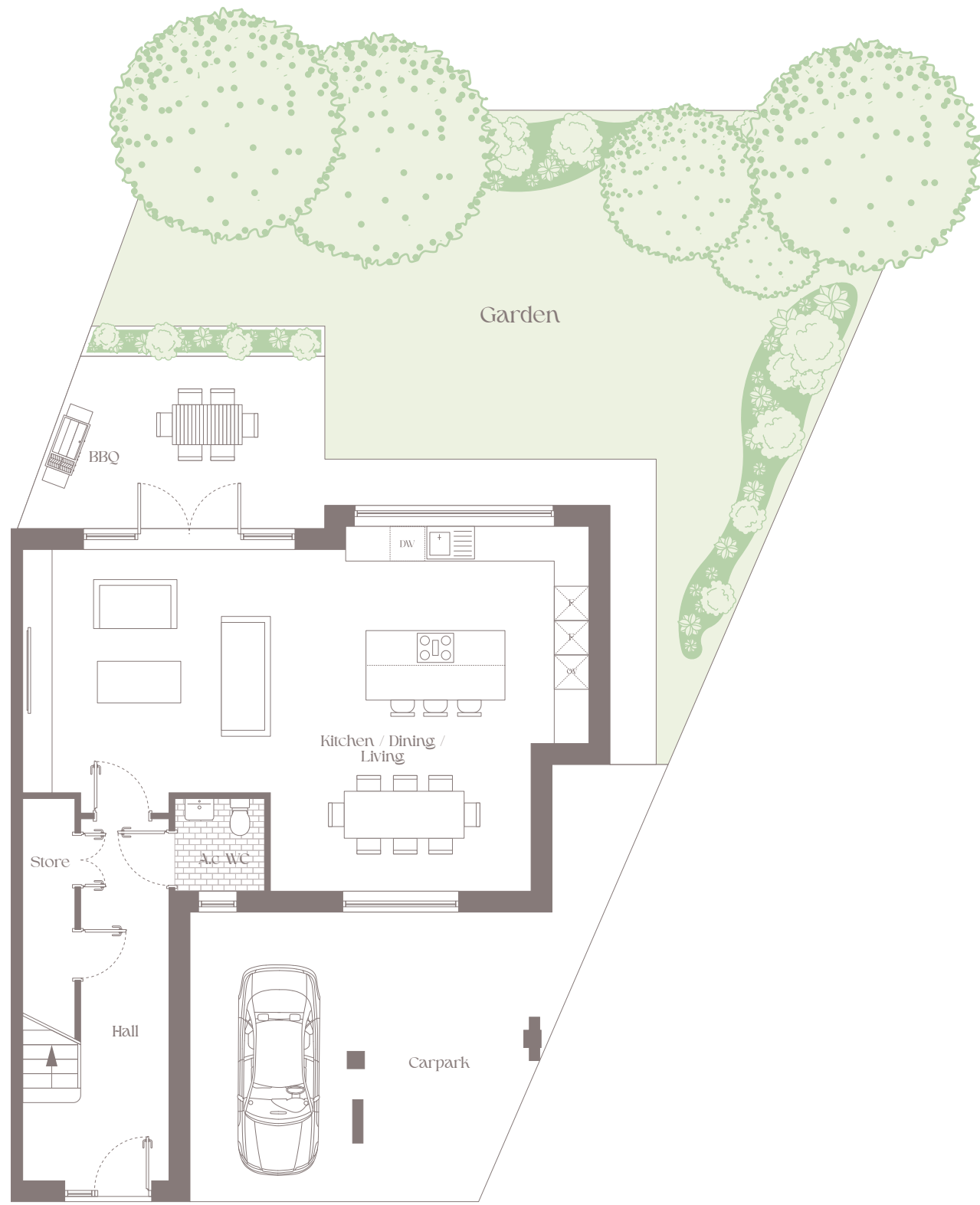


Elevation



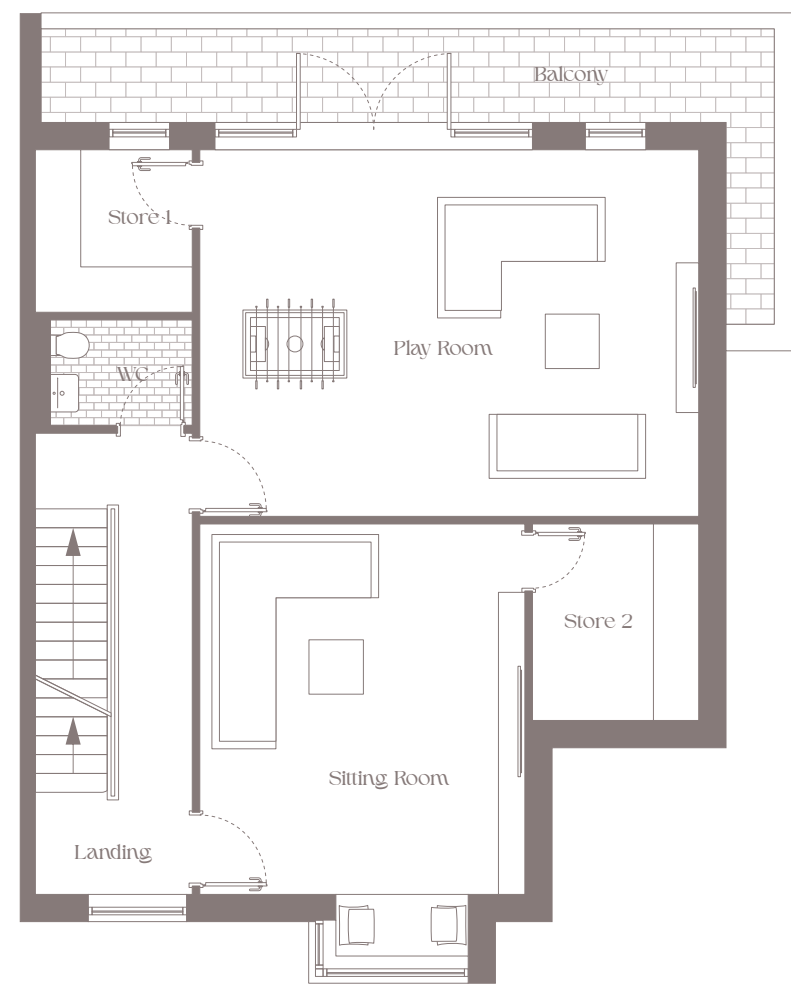
# HOUSE 3

Castle Park Manor



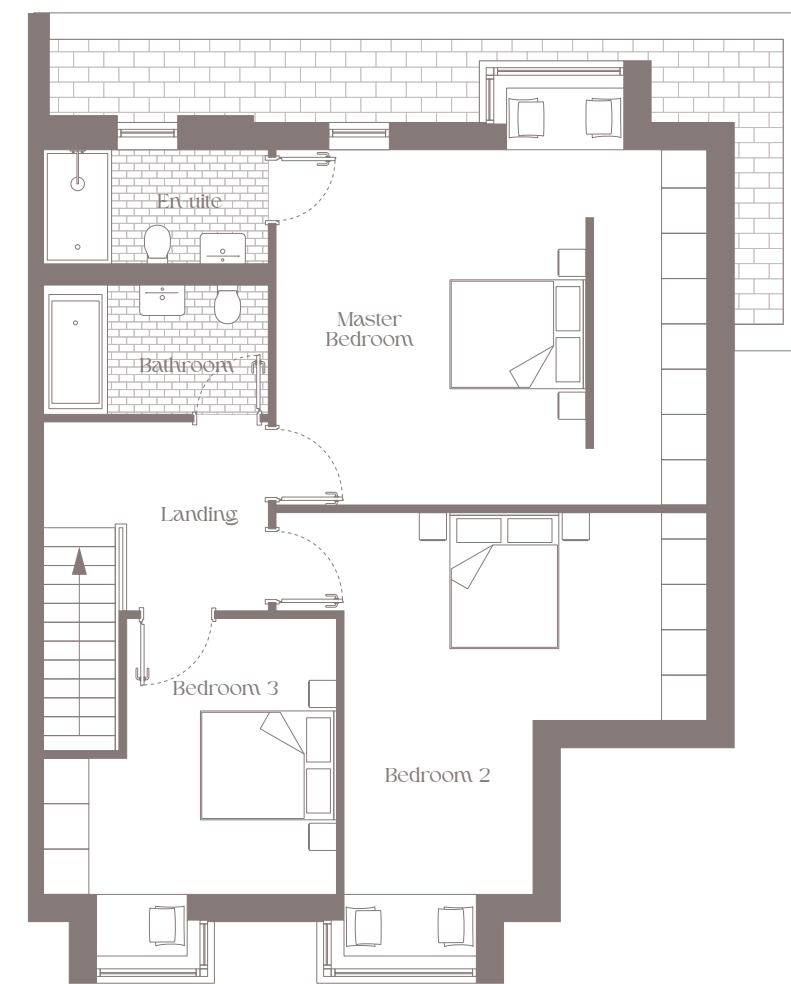
## Ground Floor

Kitchen / Dining / Living \_\_\_\_\_ 9.7m x 6.3m  
 Ac. WC \_\_\_\_\_ 1.6m x 1.6m



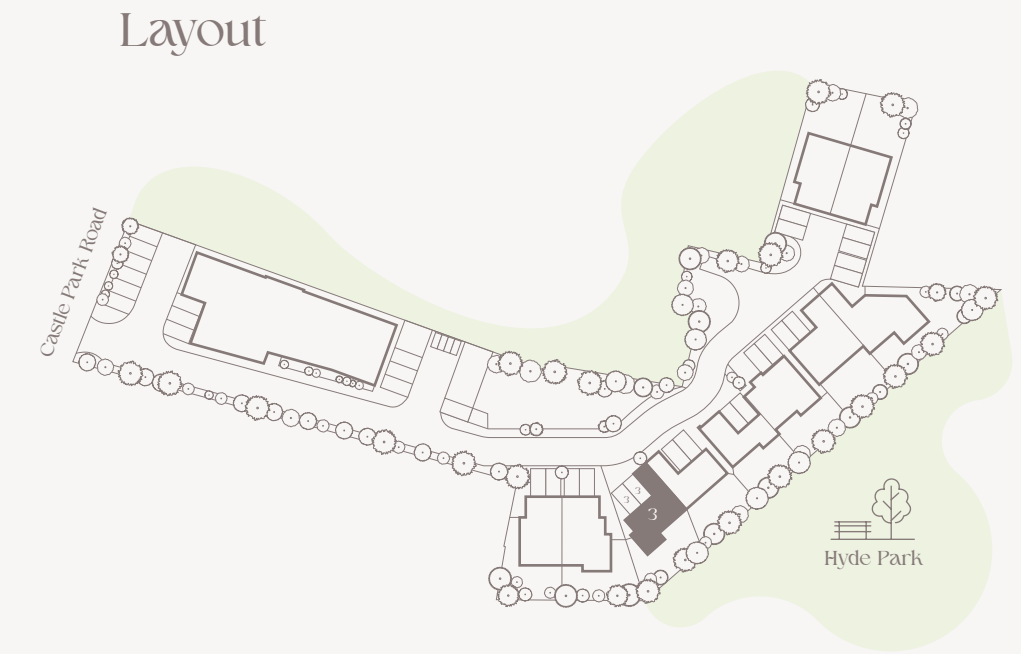
## First Floor

Play Room \_\_\_\_\_ 4.3m x 4.9m  
 Sitting Room \_\_\_\_\_ 6.6m x 4.8m  
 Store 1 \_\_\_\_\_ 2.0m x 2.1m  
 Store 2 \_\_\_\_\_ 2.2m x 2.6m  
 WC \_\_\_\_\_ 2.0m x 1.4m

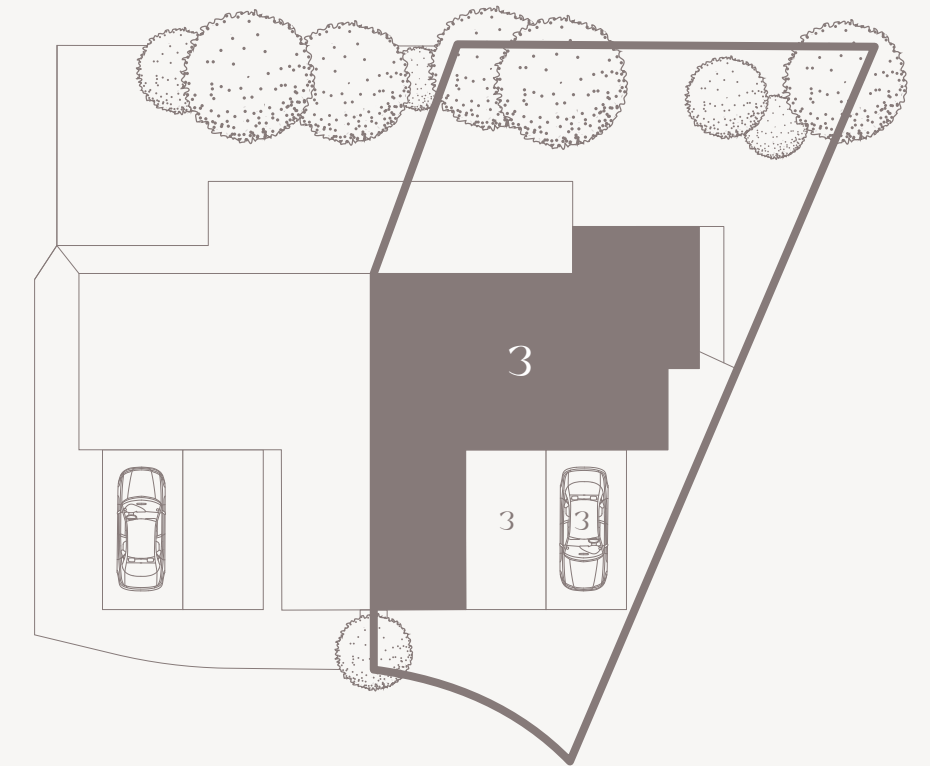


## Second Floor

Master Bedroom \_\_\_\_\_ 4.7m x 5.7m  
 Bedroom 2 \_\_\_\_\_ 4.8m x 5.0m  
 Bedroom 3 \_\_\_\_\_ 3.8m x 3.6m  
 En-suite \_\_\_\_\_ 2.9m x 1.5m  
 Bathroom \_\_\_\_\_ 2.9m x 1.7m



## House 3

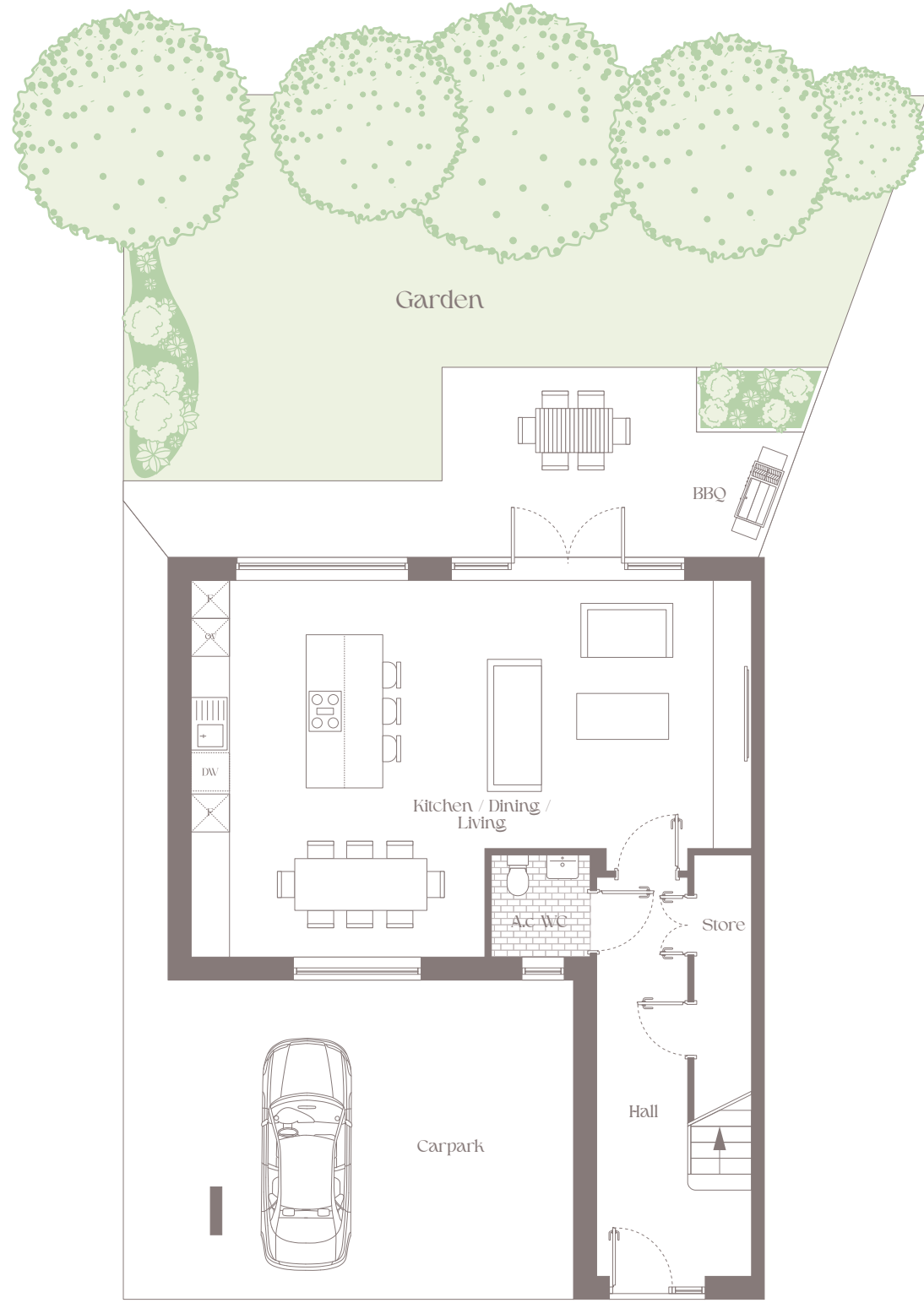


## Elevation



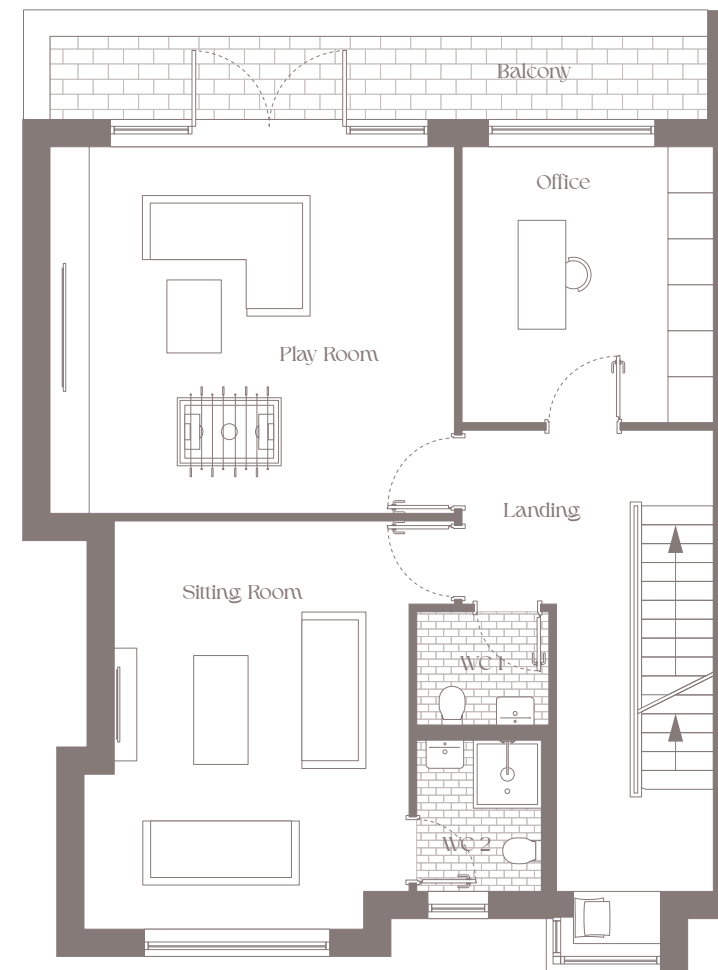
# HOUSE 4

Castle Park Manor



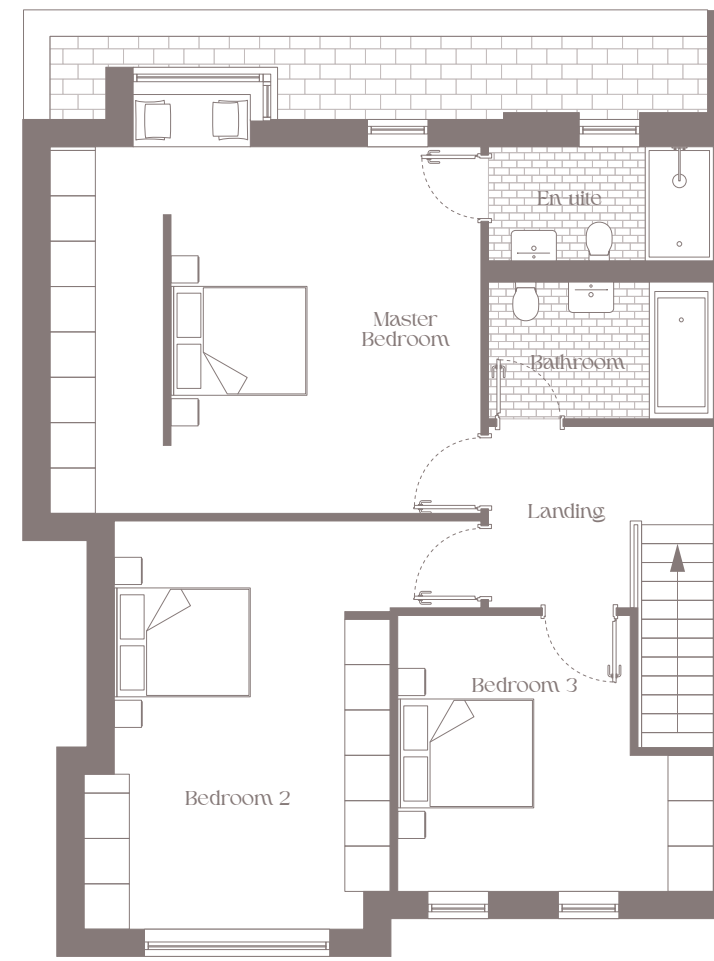
## Ground Floor

Kitchen / Dining / Living \_\_\_\_\_ 9.7m x 6.3m  
 Ac. WC \_\_\_\_\_ 1.6m x 1.6m



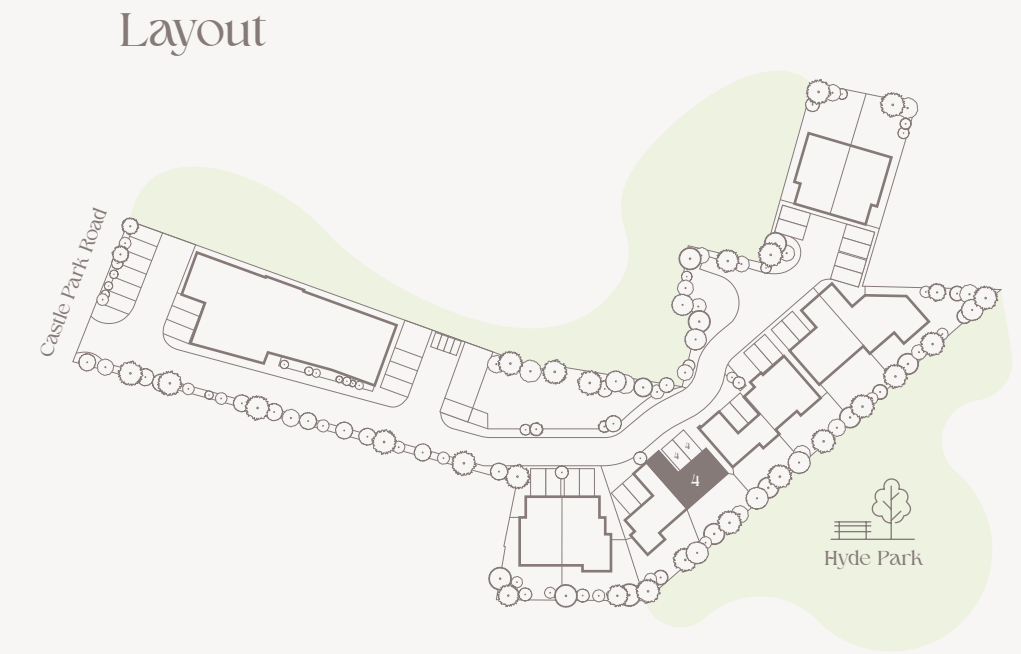
## First Floor

Play Room \_\_\_\_\_ 5.3m x 4.8m  
 Sitting Room \_\_\_\_\_ 4.3m x 5.4m  
 Office \_\_\_\_\_ 3.3m x 3.6m  
 WC 1 \_\_\_\_\_ 1.7m x 1.5m  
 WC 2 \_\_\_\_\_ 1.7m x 2.0m

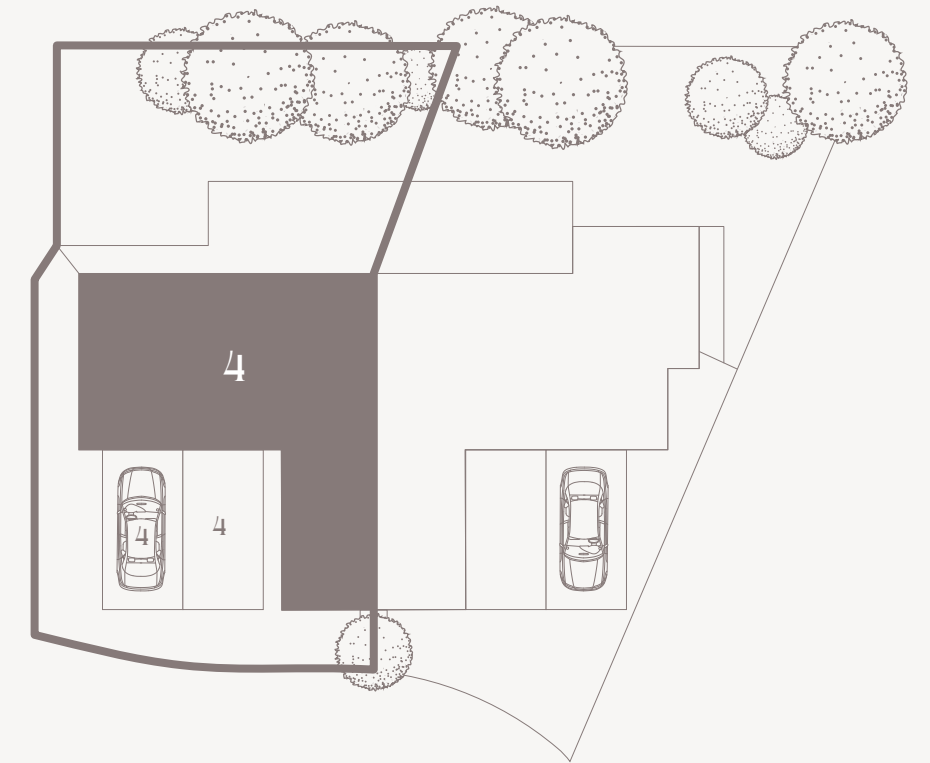


## Second Floor

Master Bedroom \_\_\_\_\_ 5.7m x 4.8m  
 Bedroom 2 \_\_\_\_\_ 5.4m x 3.7m  
 Bedroom 3 \_\_\_\_\_ 4.1m x 3.6m  
 En suite \_\_\_\_\_ 2.9m x 1.5m  
 Bathroom \_\_\_\_\_ 2.9m x 1.8m



## House 4

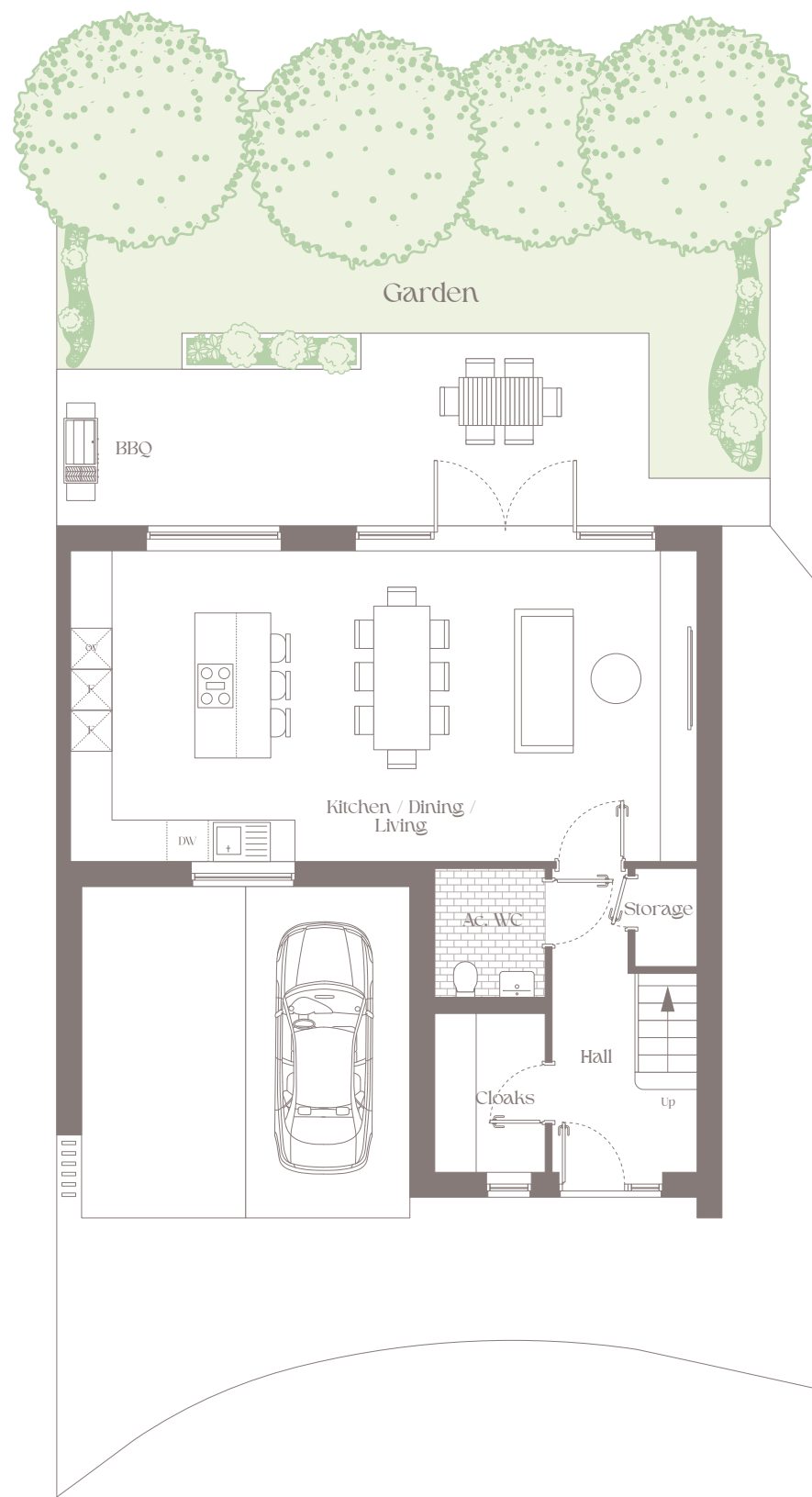


## Elevation



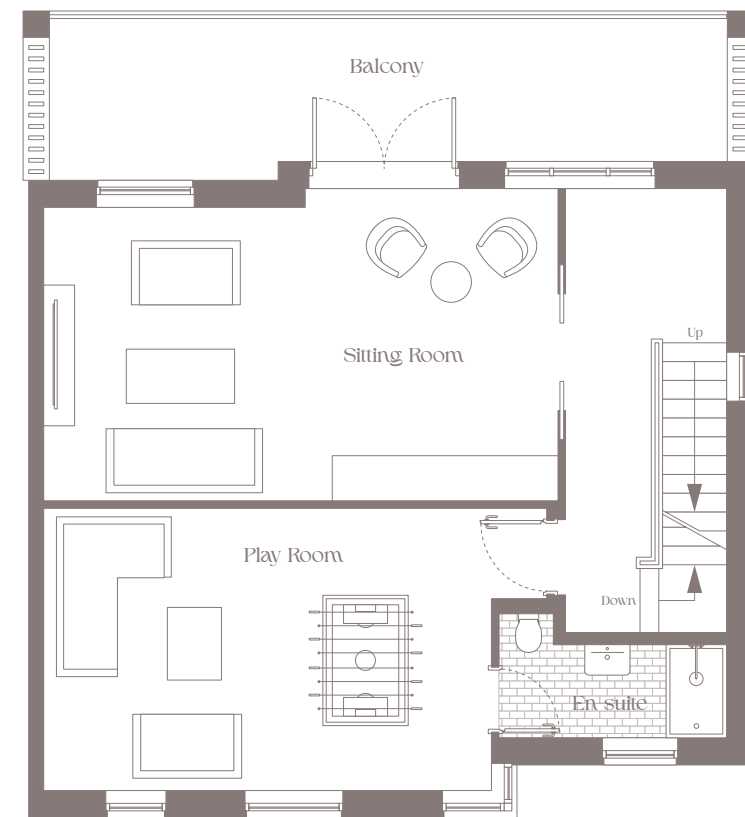
# HOUSE 5

Castle Park Manor



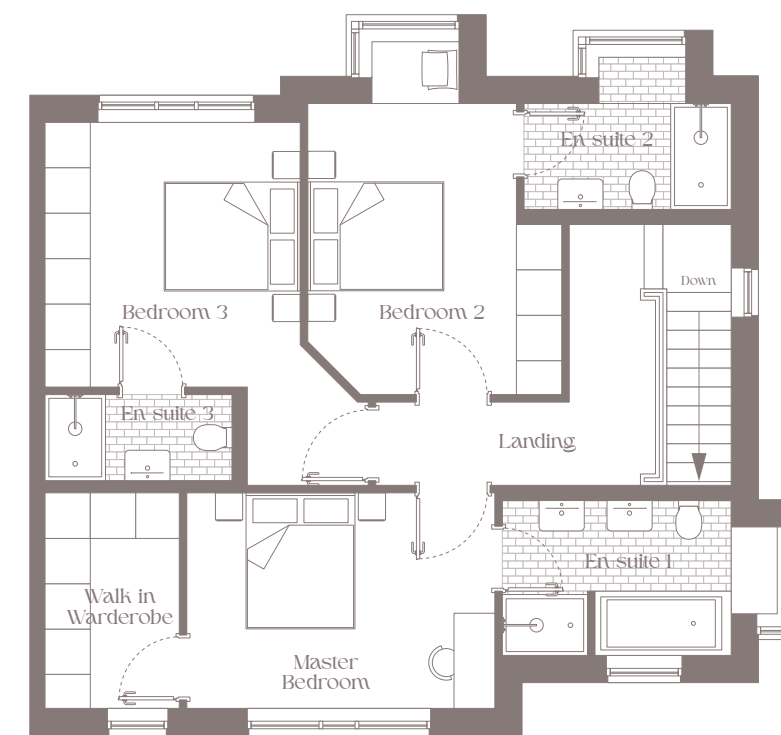
Ground Floor

Kitchen / Dining / Living	8.9m x 4.5m
Cloaks	1.6m x 2.3m
Storage	0.9m x 1.4m
Ac. WC	1.6m x 1.8m



First Floor

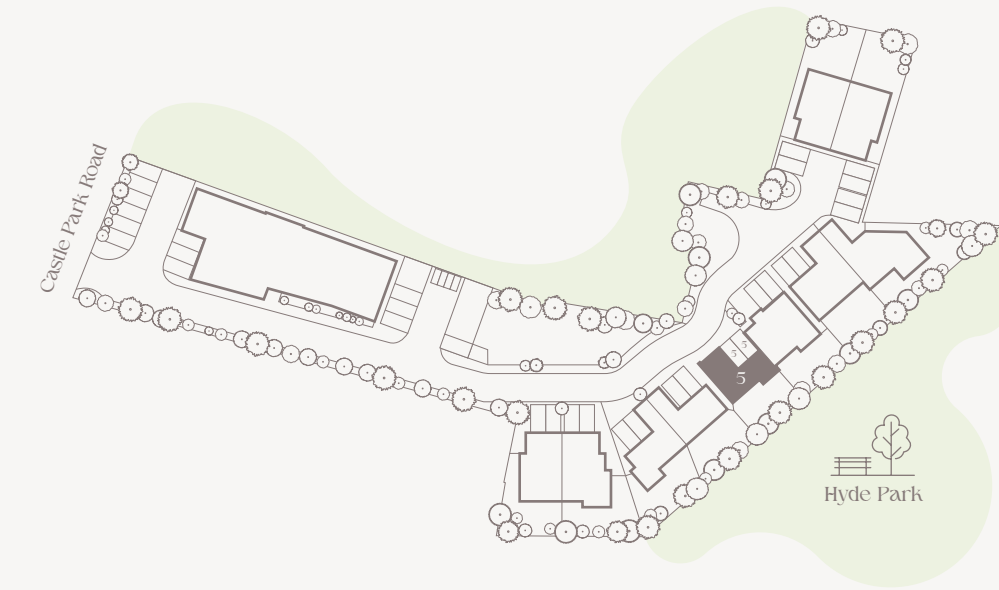
Sitting Room	6.8m x 4.1m
Play Room	5.8m x 3.7m
En-suite	3.0m x 1.6m



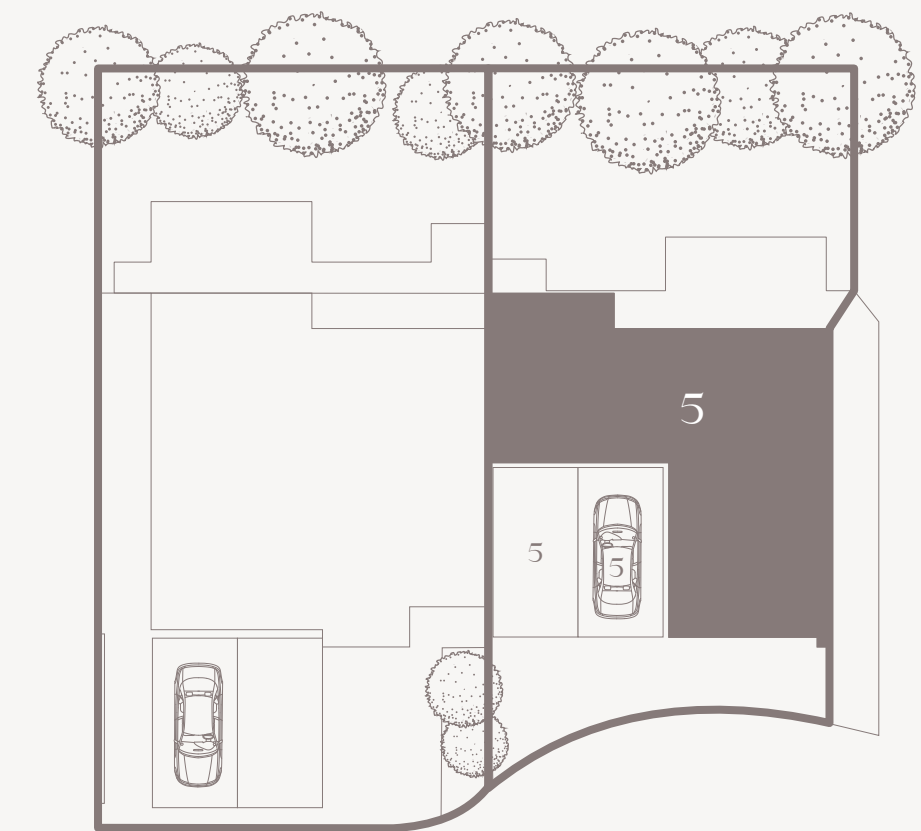
Second Floor

Master Bedroom	4.0m x 2.8m
Bedroom 2	3.3m x 3.8m
Bedroom 3	3.3m x 3.5m
En-suite 1	2.9m x 2.0m
En-suite 2	2.7m x 1.4m
En-suite 3	2.4m x 1.1m
Walk in Wardrobe	1.7m x 2.8m

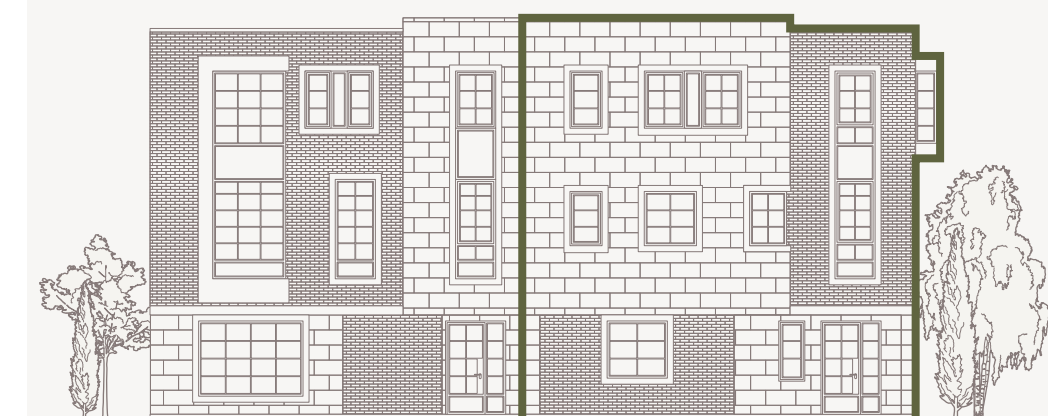
Layout



House 5

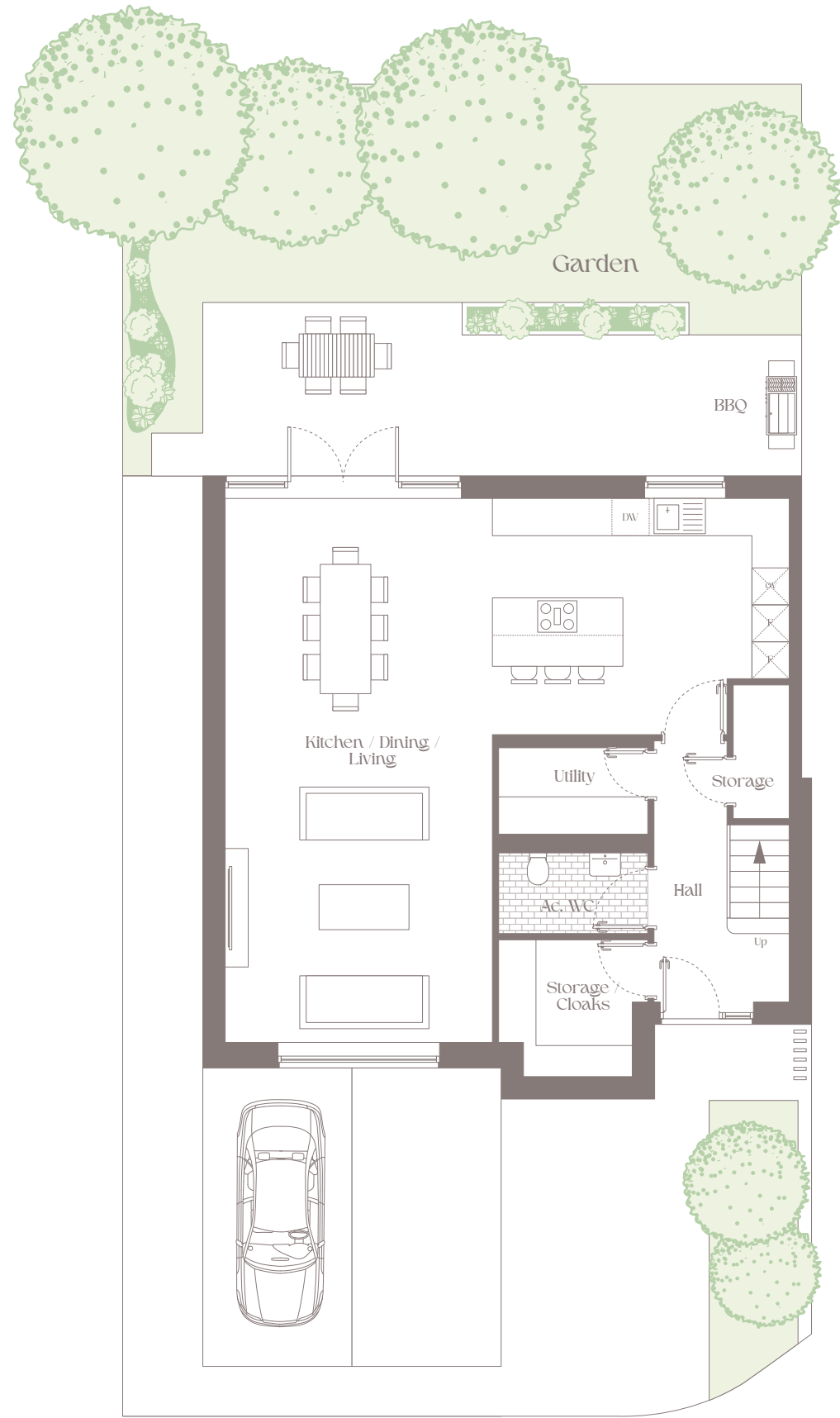


Elevation



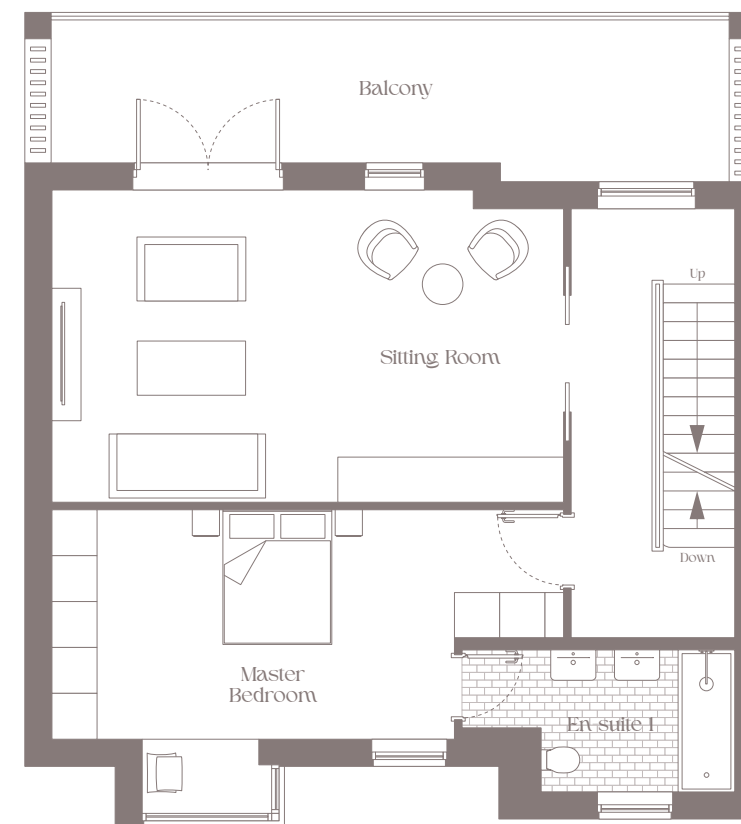
# HOUSE 6

Castle Park Manor



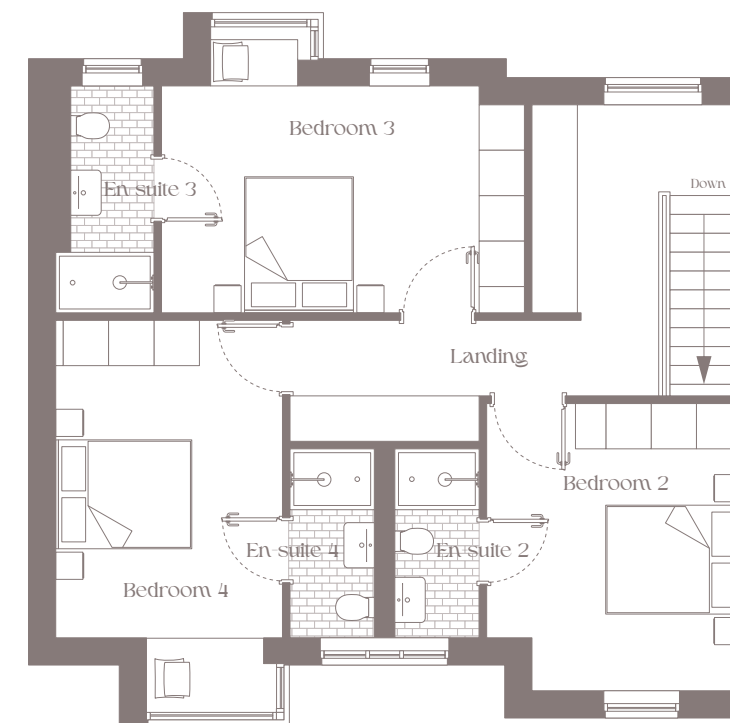
## Ground Floor

Kitchen / Dining / Living	9.0m x 8.8m
Utility	2.5m x 1.3m
Ac. WC	2.4m x 1.5m
Storage Cloaks	2.1m x 2.2m
Storage	0.9m x 2.1m



## First Floor

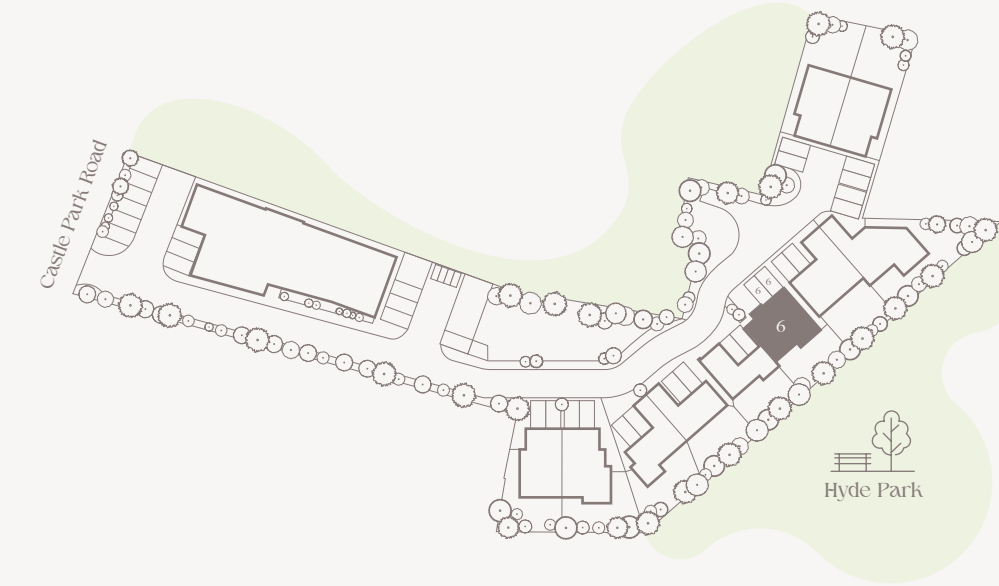
Sitting Room	6.8m x 4.1m
Master Bedroom	4.3m x 5.4m
En-suite 1	5.3m x 3.0m



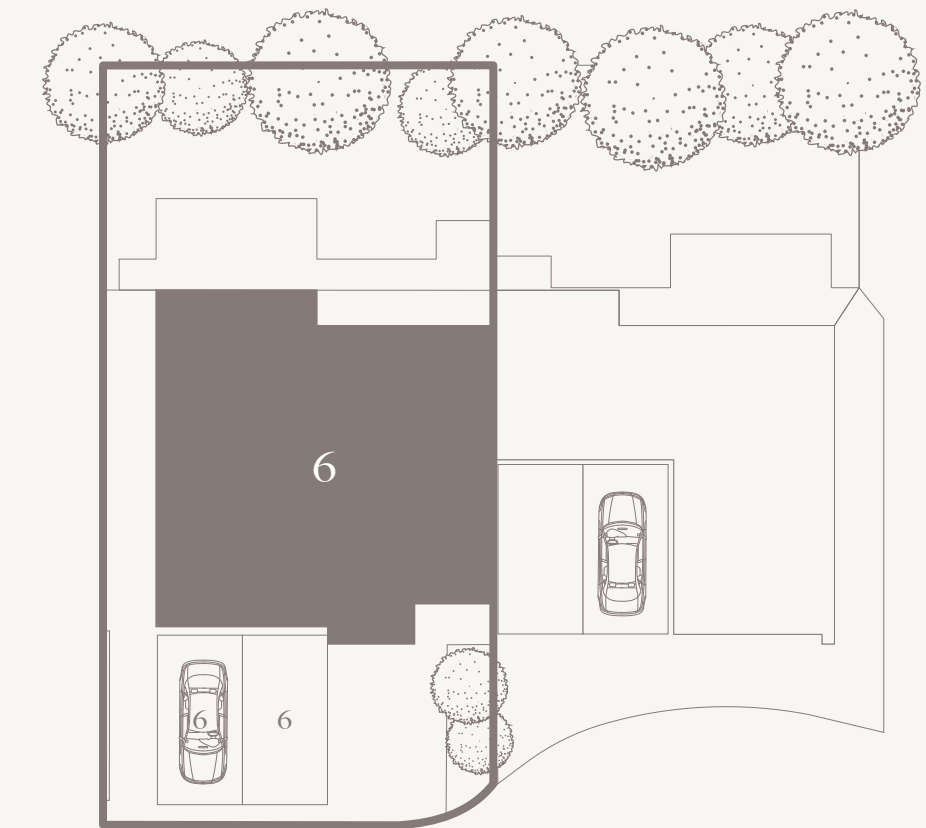
## Second Floor

Bedroom 2	3.3m x 3.8m
Bedroom 3	4.8m x 3.0m
Bedroom 4	3.0m x 4.2m
En-suite 2	1.1m x 2.5m
En-suite 3	1.3m x 3.8m
En-suite 4	1.1m x 2.5m

## Layout



## House 6



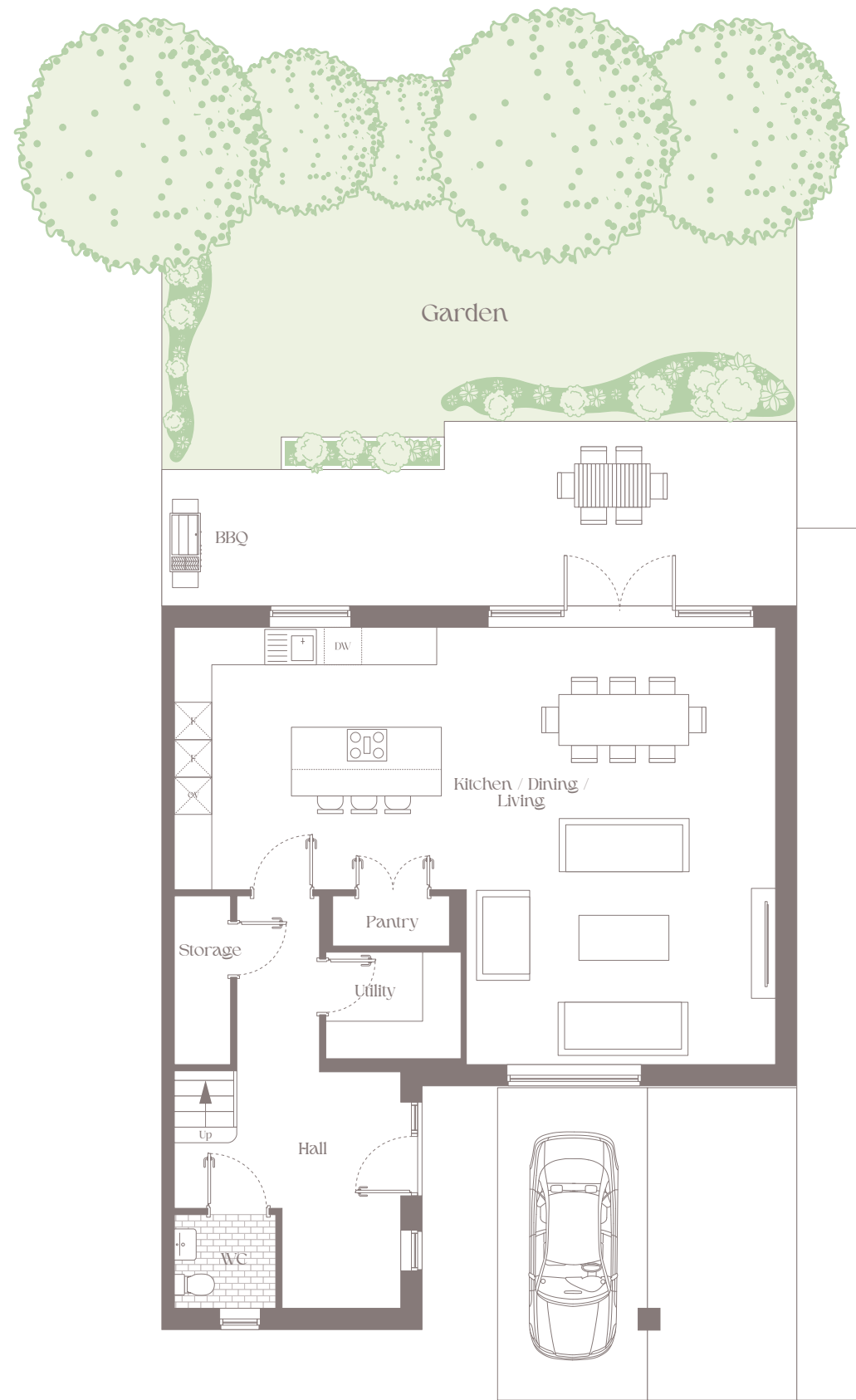
## Elevation





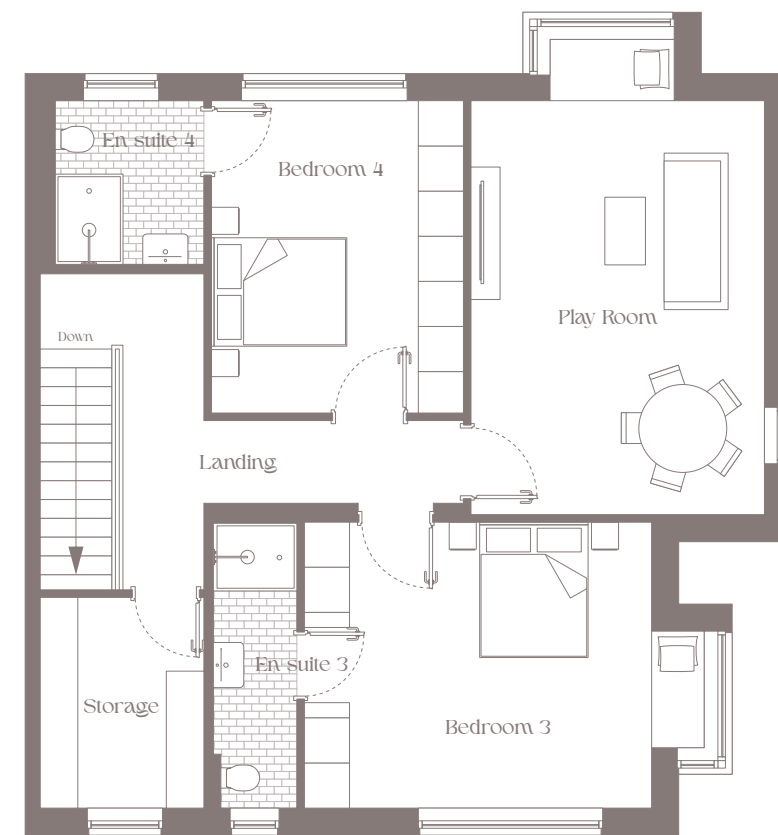
# HOUSE 7

Castle Park Manor



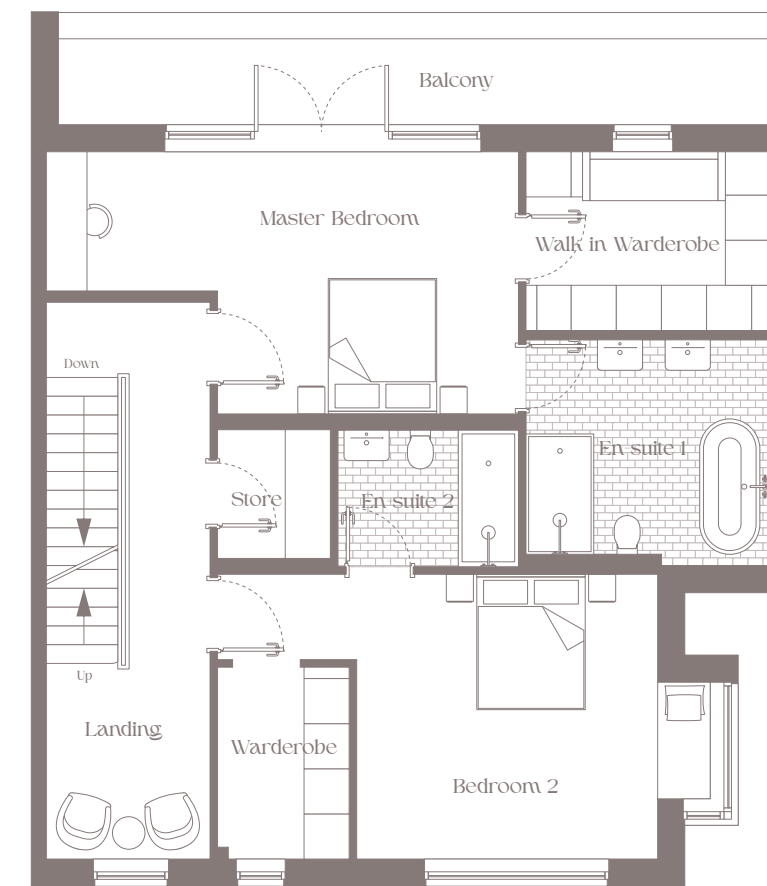
## Ground Floor

Kitchen / Dining / Living	9.6m x 7.0m
Utility	2.1m x 1.7m
WC	1.6m x 1.5m
Pantry	1.8m x 0.8m
Storage	0.9m x 2.7m



## First Floor

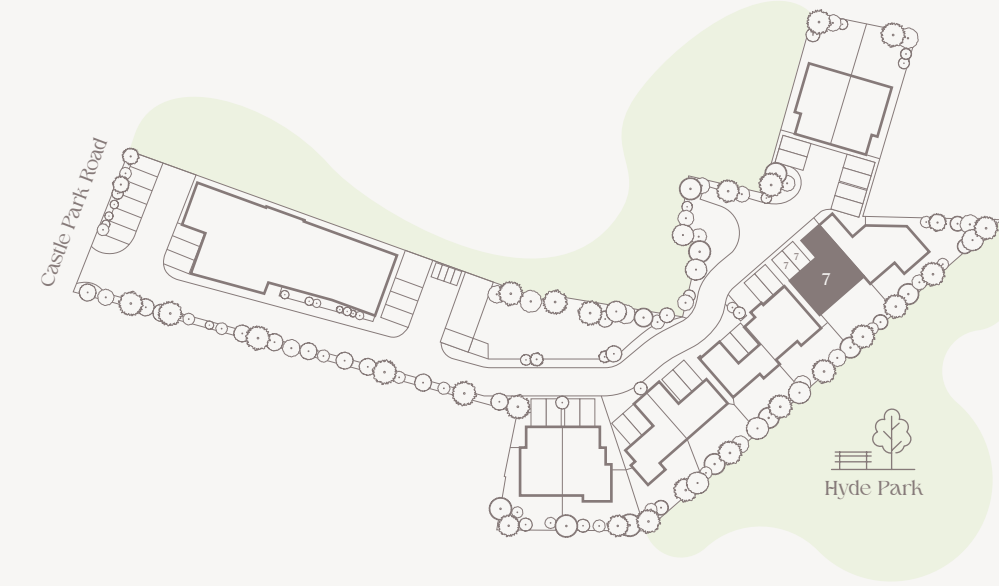
Play Room	3.9m x 5.5m
Bedroom 3	4.6m x 3.8m
Bedroom 4	3.3m x 4.1m
En suite 3	1.1m x 3.8m
En suite 4	1.9m x 2.1m
Storage	2.1m x 2.8m



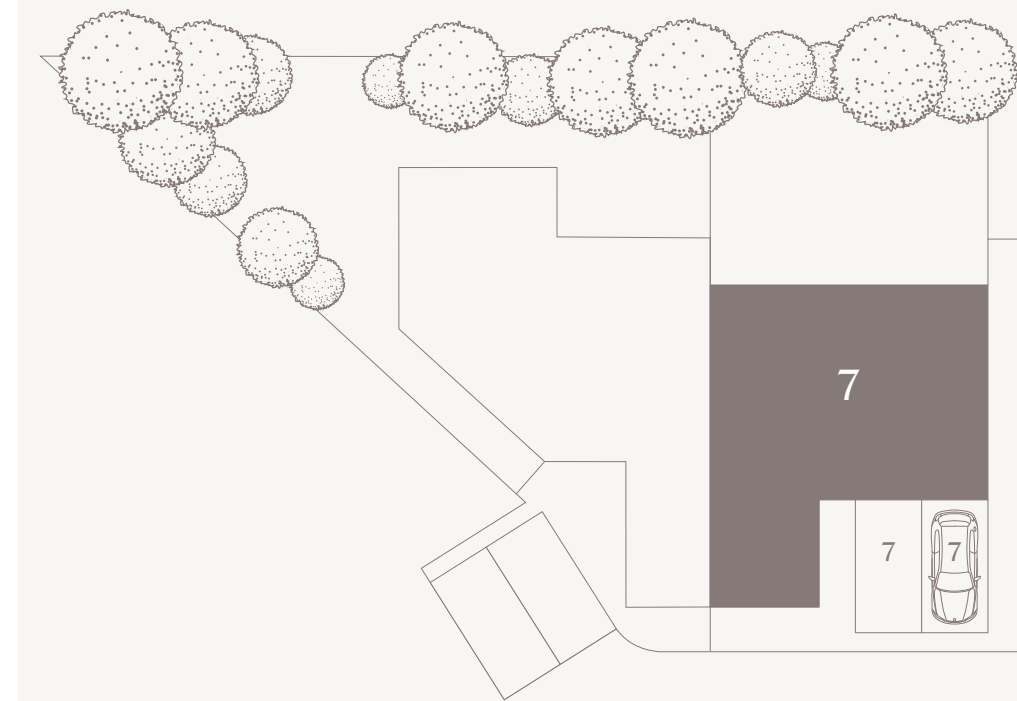
## Second Floor

Master Bedroom	6.2m x 3.5m
Bedroom 2	4.0m x 3.8m
En suite 1	3.2m x 3.0m
En suite 2	2.4m x 1.8m
Walk in Wardrobe	1.7m x 2.5m
Store	1.5m x 1.7m

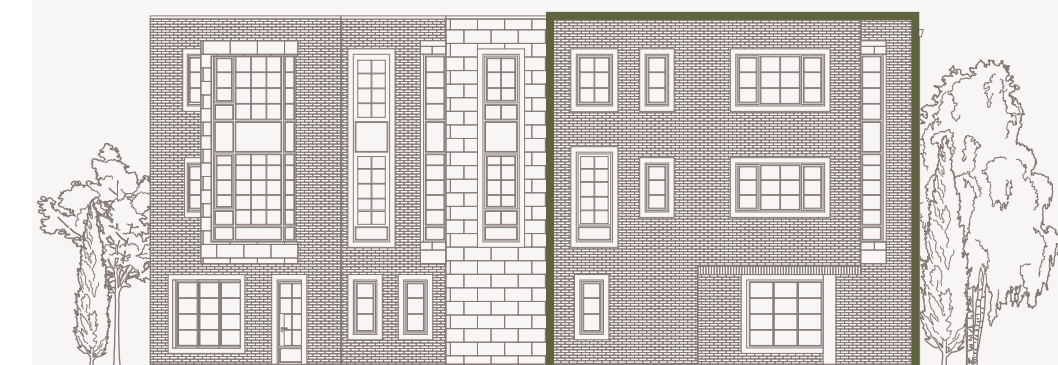
## Layout



## House 7

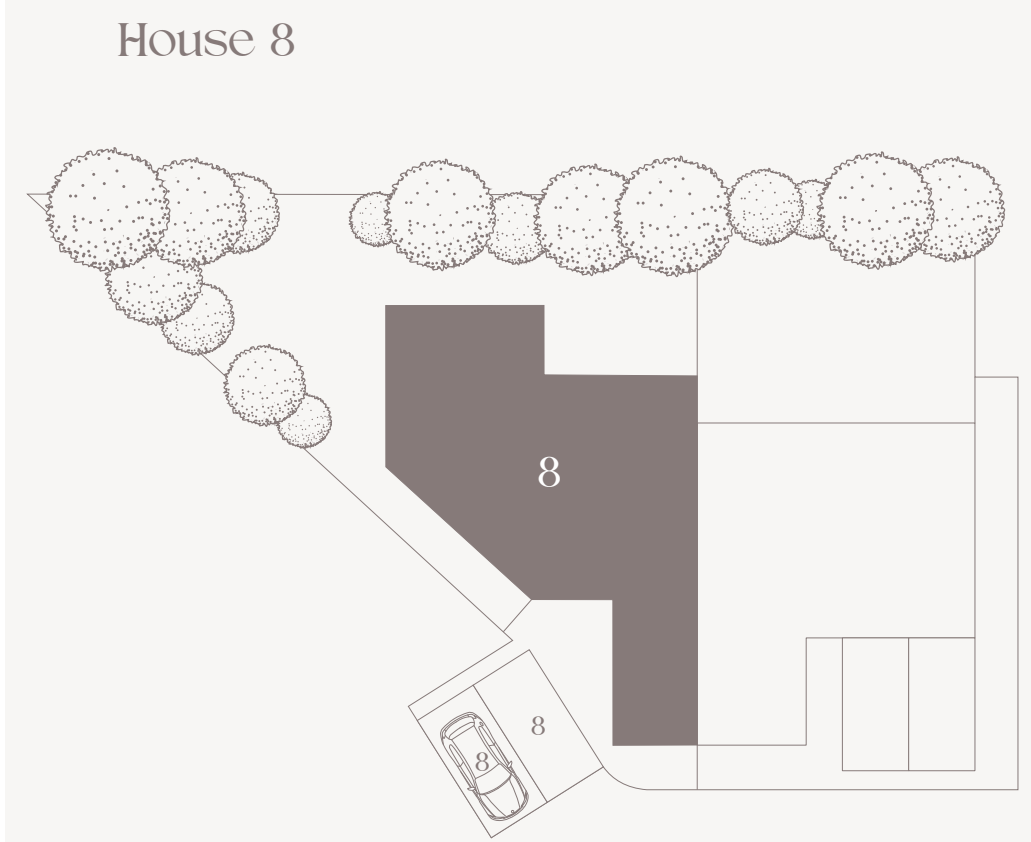
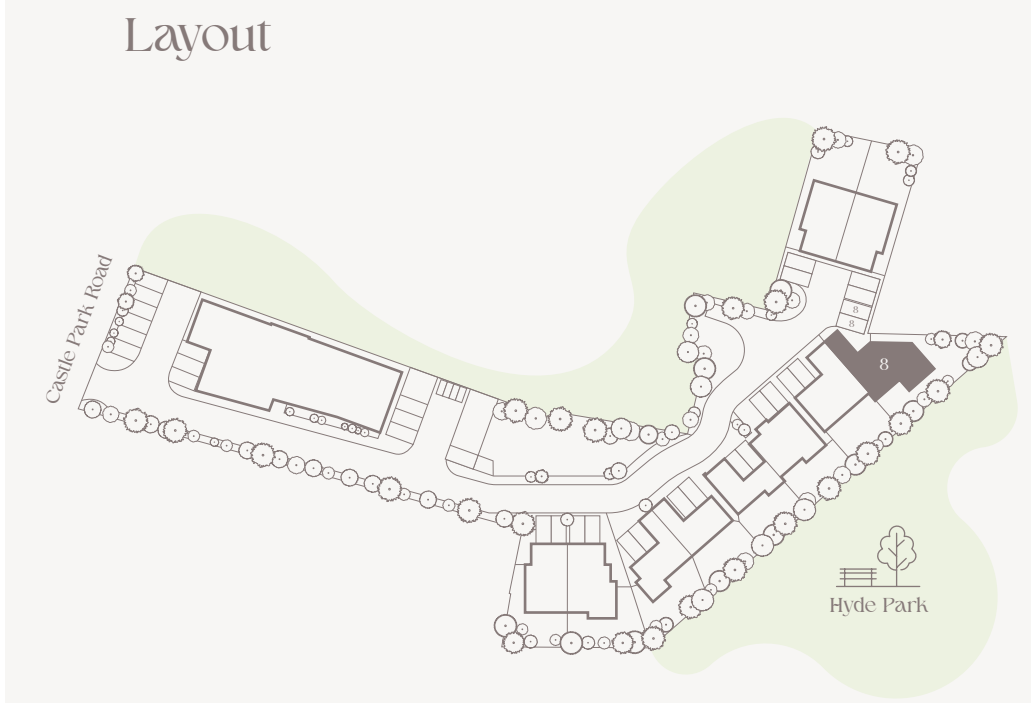
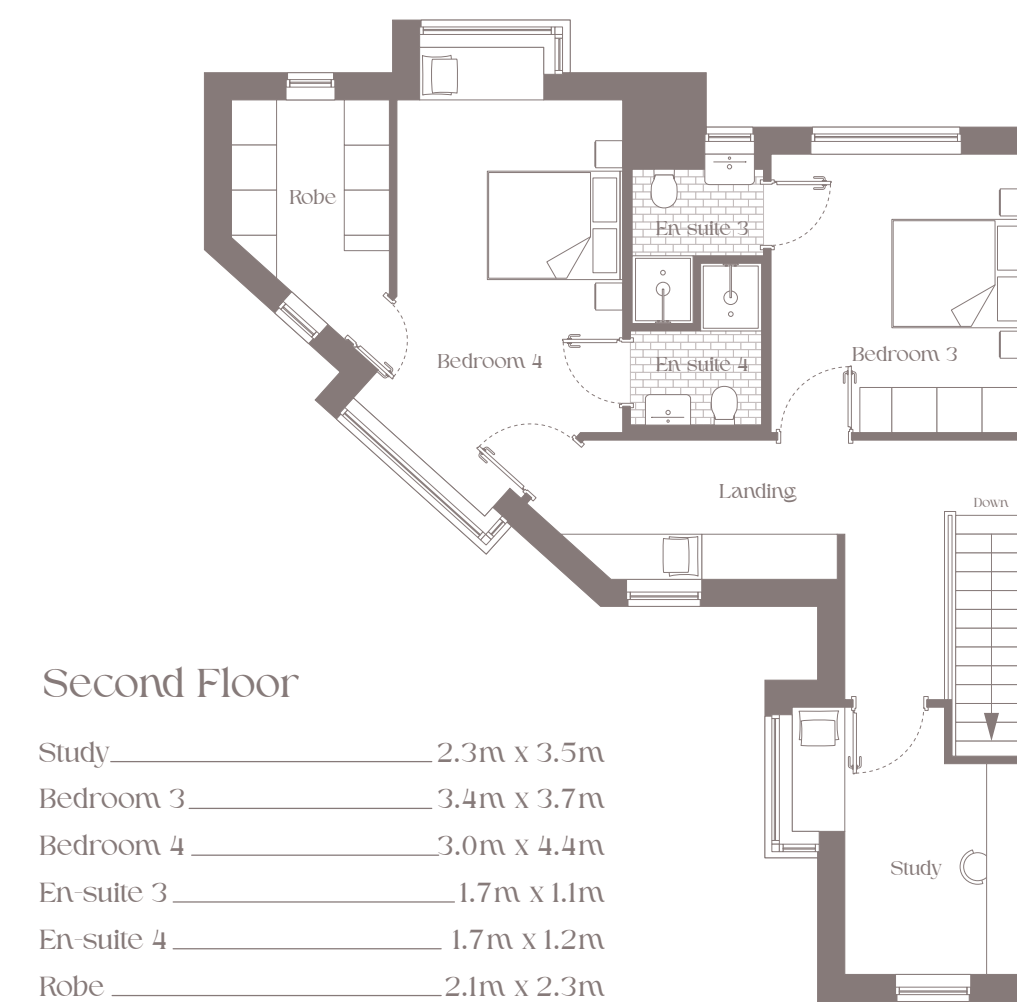
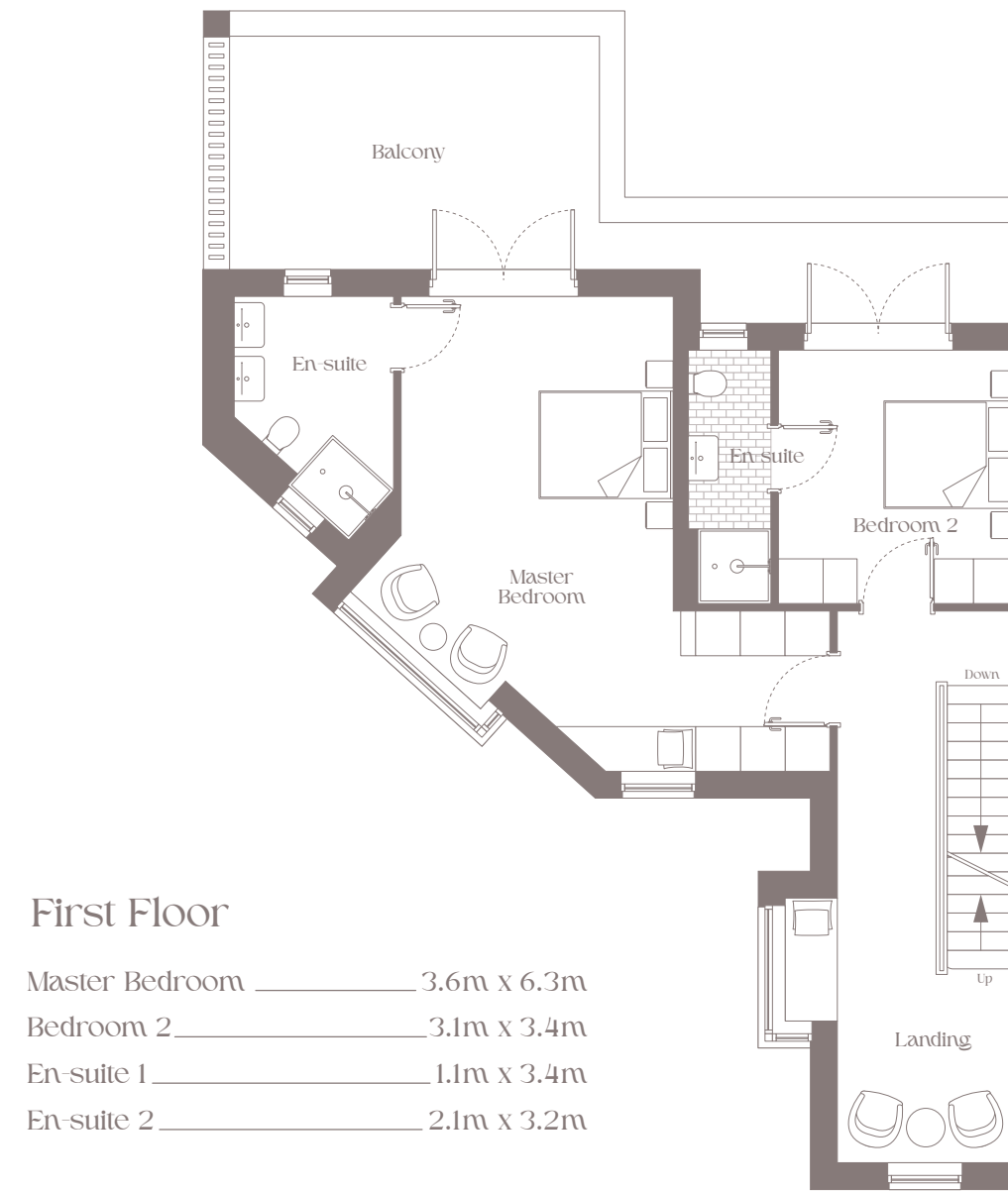
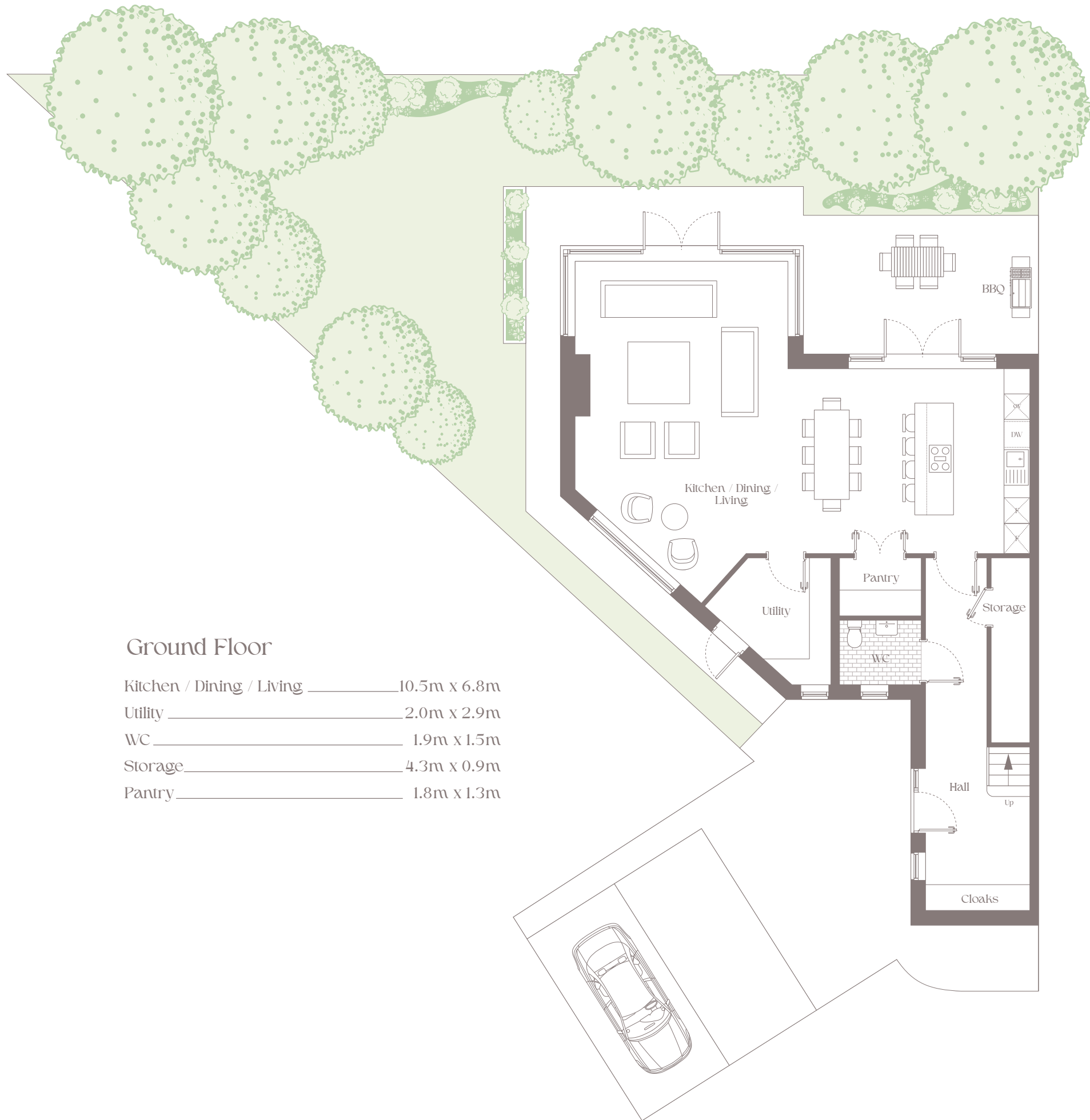


## Elevation



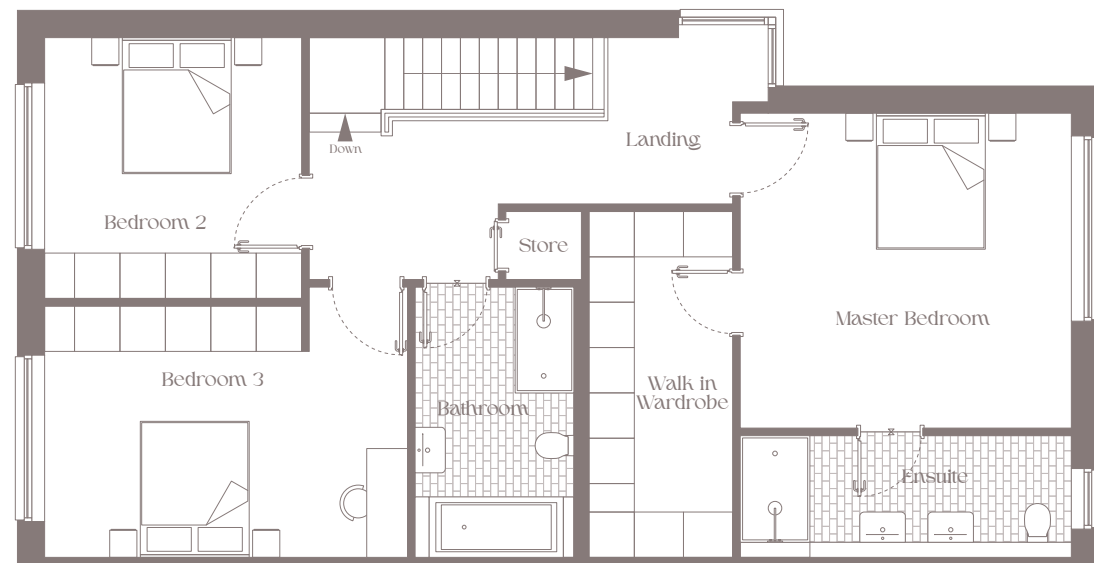
# HOUSE 8

Castle Park Manor



# HOUSE 9

Castle Park Manor



## First Floor

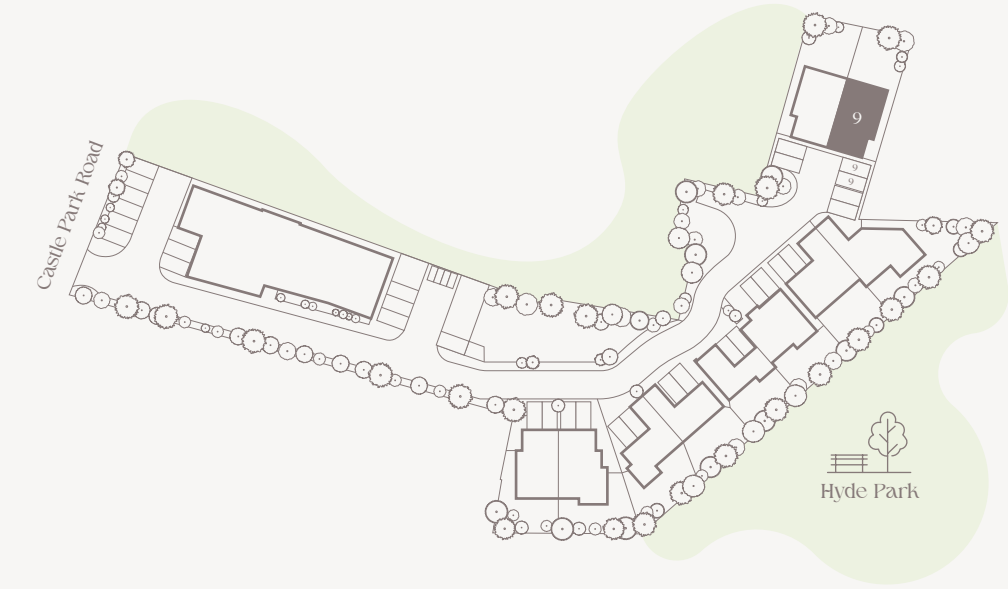
Master Bedroom	4.1m x 4.3m
Ensuite	1.4m x 4.3m
Walk in Wardrobe	4.5m x 1.9m
Bedroom 2	3.4m x 3.4m
Bedroom 3	3.3m x 4.9m
Bathroom	3.5m x 2.1m



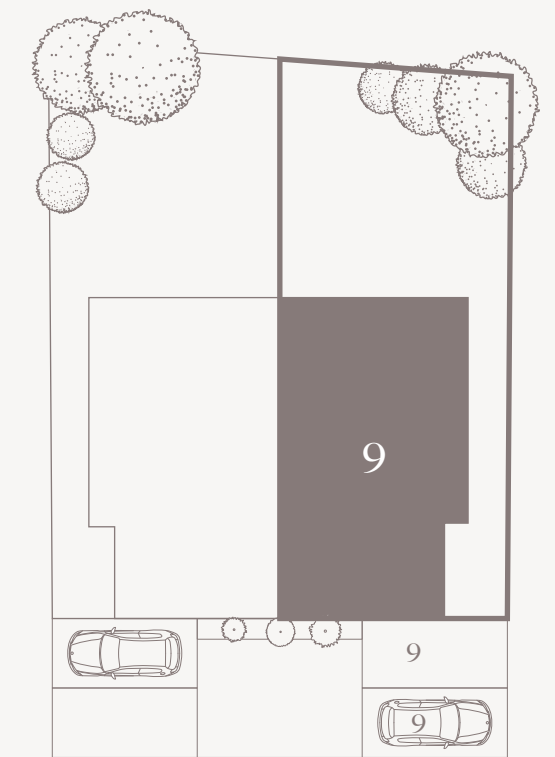
## Ground Floor

Kitchen / Dining	6.8m x 5.1m
Sitting Room	4.5m x 4.4m
Utility	2.9m x 1.8m
WC	1.5m x 1.7m

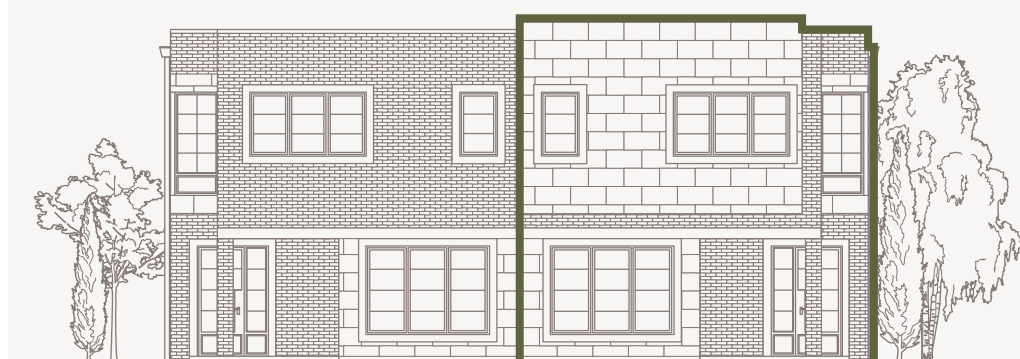
## Layout



## House 9

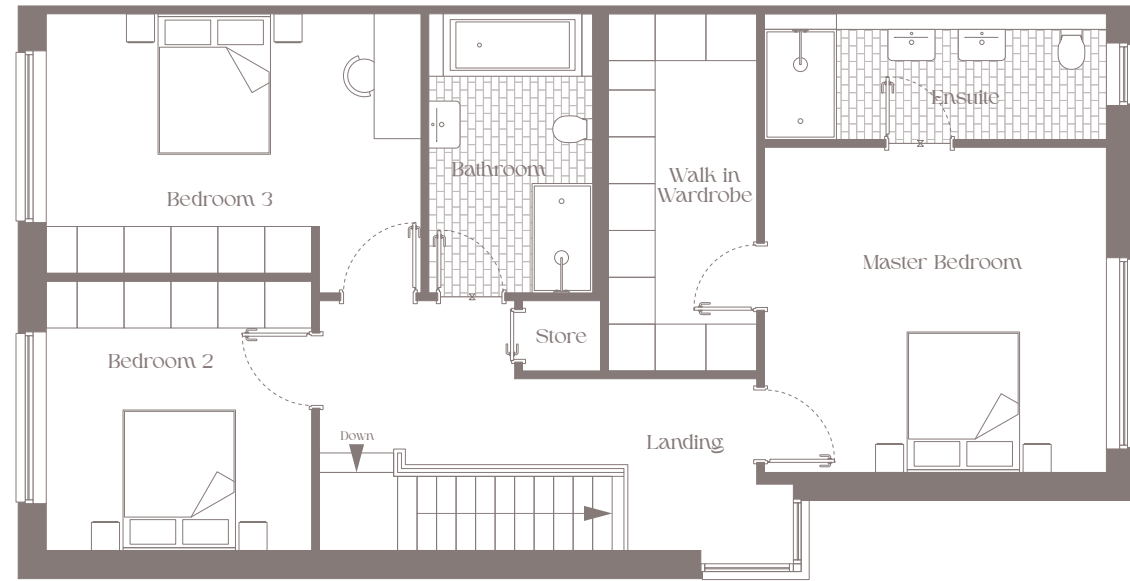


## Elevation



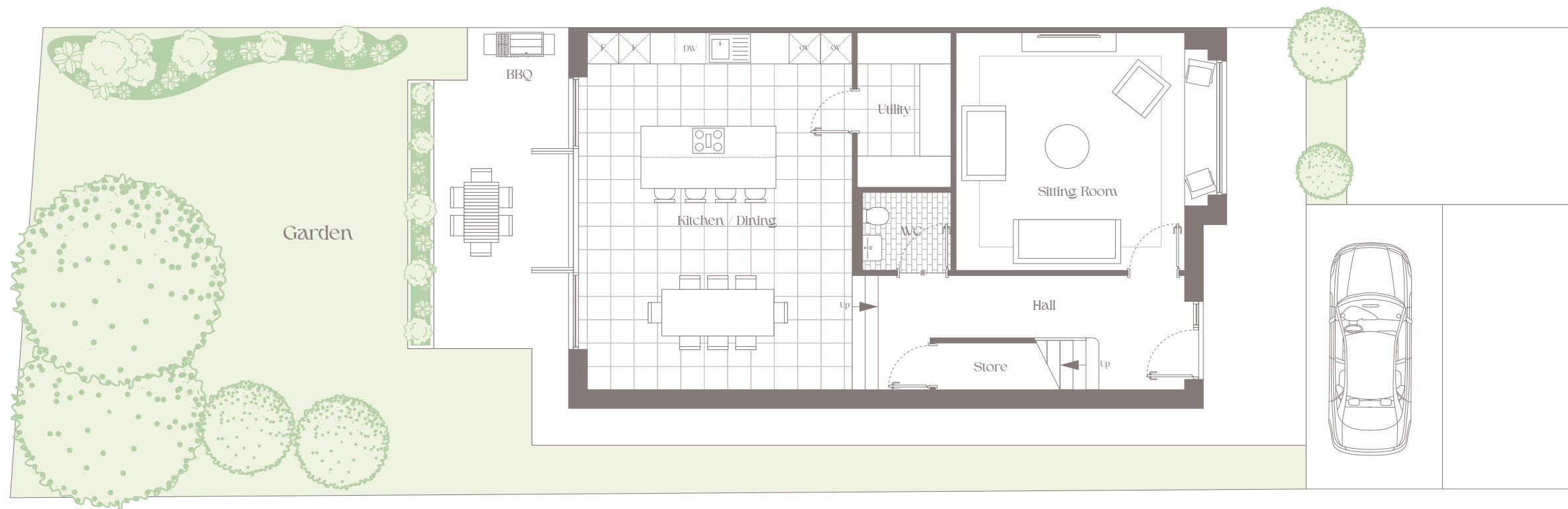
# HOUSE 10

Castle Park Manor



## First Floor

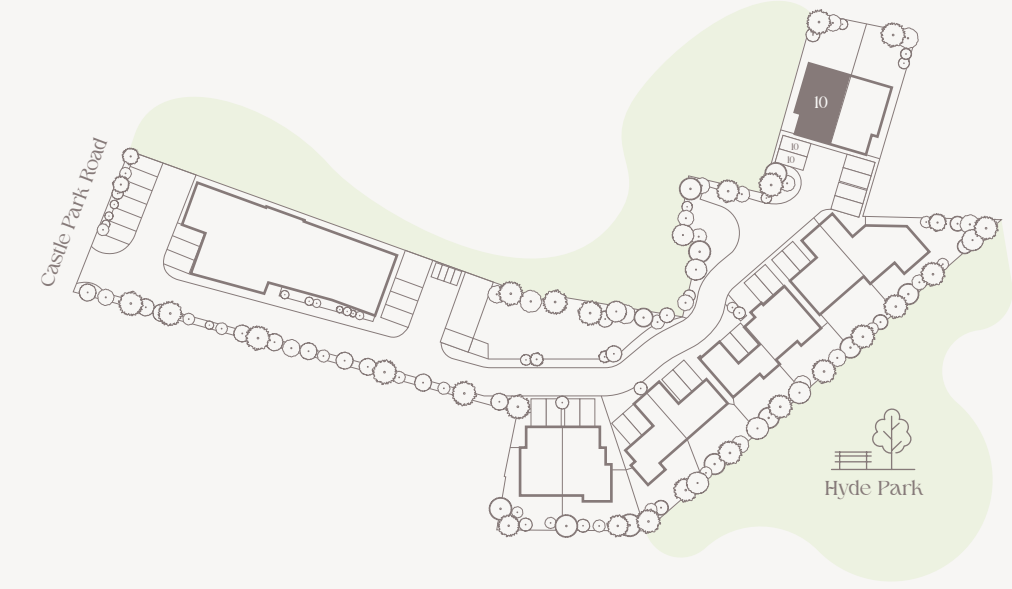
Master Bedroom	4.1m x 4.3m
Ensuite	1.4m x 4.3m
Walk in Wardrobe	4.5m x 1.9m
Bedroom 2	3.4m x 3.4m
Bedroom 3	3.3m x 4.9m
Bathroom	3.5m x 2.1m



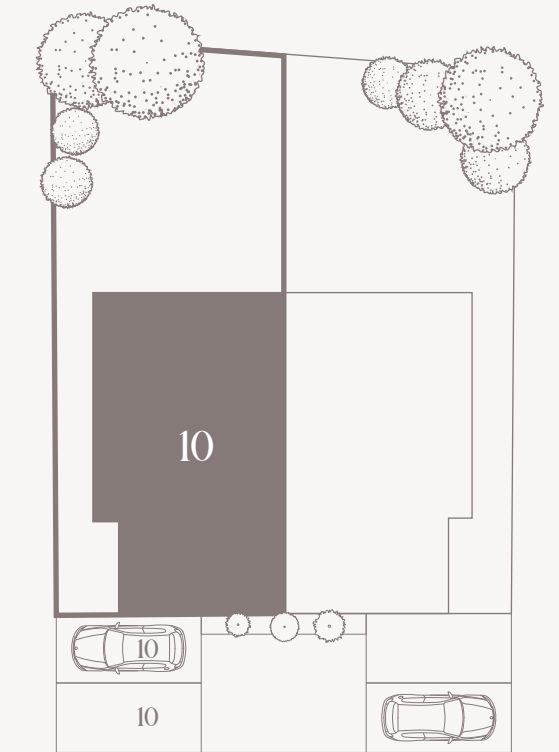
## Ground Floor

Kitchen / Dining	6.8m x 5.1m
Sitting Room	4.5m x 4.4m
Utility	2.9m x 1.8m
WC	1.5m x 1.7m

## Layout



## House 10



## Elevation









# SPECIFICATION

## Interiors & Finishes

---

- High-quality fitted kitchens and bespoke joinery by Michael Farrell
- Blanco sink and 3-in-1 tap supplying cold, hot, and boiling water
- Premium Gaggenau cooking appliances
- Separate utility room with integrated washing machine and dryer
- Smart home features and intelligent lighting system
- Elegant Kährs oak engineered wide-board flooring (305mm) in hall, living, and kitchen/ dining areas
- High-performance electrical spec including kitchen spotlights, modern sockets with USB ports

## Construction & Structure

---

- Keegan Precast homes with solid concrete floors and stairs throughout
- Durable metal stud walls for superior build quality
- Elevated floor-to-ceiling heights, many with coffered ceilings and recessed lighting
- All walls and ceilings fully plastered and painted
- Exceptionally high levels of insulation and airtightness

## Windows & Doors

---

- Carlson aluclad Crittall-style windows and doors
- High-performance, double-glazed windows with multi-point locking system
- Composite main entrance door for added security and durability





CASTLE PARK

MANOR  DALKEY

[www.castleparkmanor.com](http://www.castleparkmanor.com)